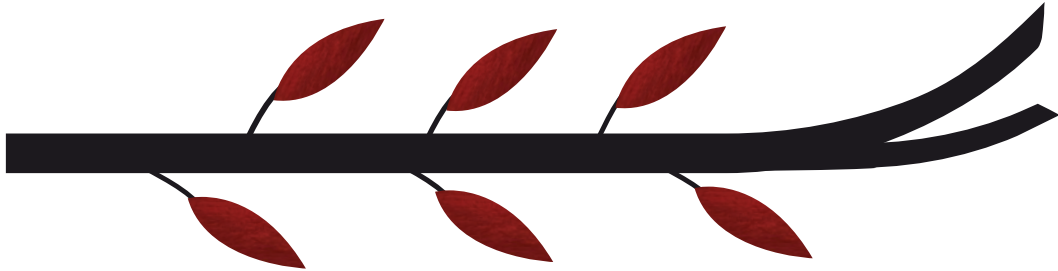


Client Booklet: Numeracy Level 2



Candidate's Name: _____

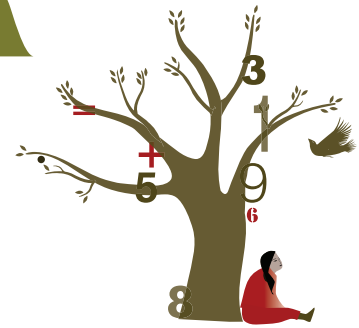
Date of Assessment: _____

Assessment Location: _____

Assessor's Name: _____

Introduction

Numeracy is the ability to use and understand numbers. Numeracy skills are important to be able to manage money and carry out transactions such as paying for a purchase or paying your bills. Numeracy skills are also used to measure and estimate, such as ingredients in a recipe or the size of a room.



You are about to complete a needs assessment for **Numeracy, Level 2**. This is not a test – it is an opportunity to help identify your numeracy skills strengths and areas you may want to consider improving. This information will help you to make decisions about job skills training and job searches.

Instructions

1. You will have an assessor present with you (i.e. an employment or career counsellors) while you complete the assessment. **Feel free to ask your assessor questions at any time.**
2. Each assessment question in this booklet describes a typical workplace task that shows how numeracy skills are used in different jobs in Canada.
3. Space is provided after each question if you would like to write down any notes. You are encouraged to use it to show how you arrived at your answer. If the space provided in the booklet is not enough, your assessor can provide you with additional paper. As displayed in the box below, you can write your final answer in the space provided, or you can circle the answer in your notes.

Answer: 8

$$2 + 4 = 6$$

$$\begin{array}{r} 6 \\ \times 3 \\ \hline 18 \end{array}$$

$$18 - 10 = \textcircled{8}$$

4. You can use a calculator to complete the questions in Numeracy Level 2.

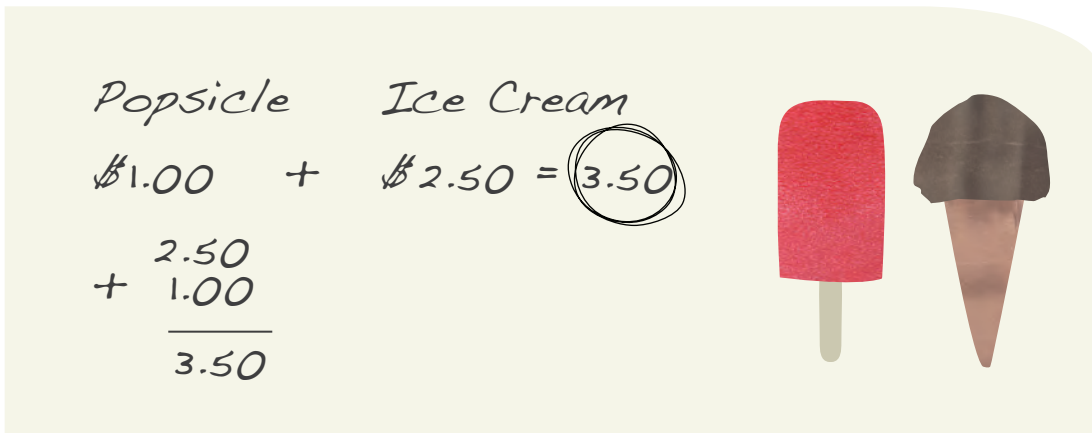
A tip: When you're on the job, using a calculator saves time. Become familiar with your calculator so that you can use all of its features.

5. If you have difficulty answering a question, you can move on to the next task and return to it later.
6. Take your time to complete the questions – there is no set time limit.
7. You can take a break at any point during the assessment. You can also choose to stop the assessment and have the option to re-schedule for another time.
8. Once you have completed all the questions, or as many questions as you can, your assessor will review them with you.

Here is a sample question to help familiarize you with the assessment format:

A snack bar worker is selling frozen treats. A customer buys one popsicle for \$1.00 and one ice cream cone for \$2.50. What is the customer's total bill?

Answer: $\$3.50$



The image shows a handwritten math problem on a light green background. On the left, there are two addition problems. The first is $\$1.00 + \$2.50 = 3.50$, where the result 3.50 is circled. The second is a vertical addition: $\begin{array}{r} 2.50 \\ + 1.00 \\ \hline 3.50 \end{array}$. To the right of the math are two illustrations: a red popsicle and a chocolate ice cream cone.

Question 1:

A cashier is calculating a customer's bill. The bill subtotal is \$300.00 and an additional 5% sales tax must be added. What is the total amount of the customer's bill including the 5% sales tax?

Answer:

Question 2:

A hotel front desk clerk needs to convert United States (US) dollars into Canadian (CDN) dollars. The clerk consults the daily exchange rate below:

\$1 US = \$1.03 CDN

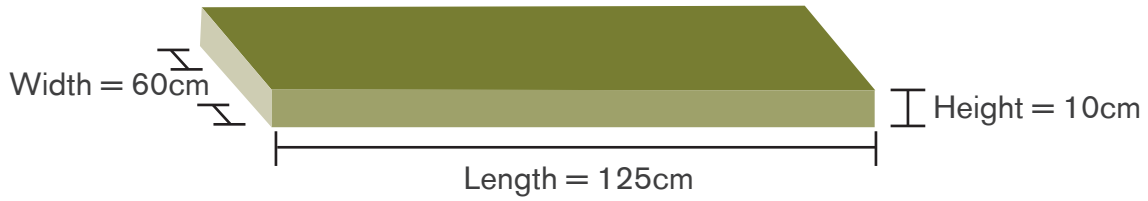
Based on the exchange rate above, what would be the total amount of Canadian dollars if you convert \$78 US dollars?

Answer:



Question 3:

A construction helper needs to calculate the volume of a concrete slab. The slab is 125 centimetres long, 60 centimetres wide and 10 centimetres high. Calculate the volume of the slab in cubic centimetres (cm^3).



Answer: cm^3

Question 4:

A front desk clerk needs to calculate the average rate for a hotel room. Below are the rates for each room:

Room Rates

Room 101	\$145.00
Room 105	\$ 80.00
Room 106	\$ 95.00
Room 107	\$ 90.00
Room 206	\$125.00
Room 209	\$140.00

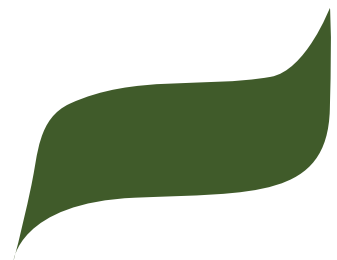
What is the average rate per room?

Answer:

Question 5:

A customer asks a butcher for “three pounds of beef.” If a pound is 0.4536 kilograms, what is the weight of the beef in kilograms?

Answer: kilograms (kg)



Question 6:

A kitchen helper is making cookies using the following recipe:

Grandma Maggie's Scrumptious Sugar Cookies

Preparation Time: 15 minutes

Baking time: 25 minutes

Yields: 40 servings/cookies

Ingredients:

2 cups all-purpose flour
1 teaspoon baking soda
1/2 teaspoon baking powder
1 cup butter, softened
1 1/2 cups white sugar
2 eggs
1/4 teaspoon vanilla extract

If the kitchen helper only wants to make 20 cookies, how much sugar is needed?

Answer: cups

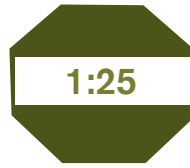


Question 7:

A worker in a fish processing plant needs to calculate the total time required to clean a fish conveyor. The worker began cleaning the conveyor at 11:30 a.m. and finished at 1:25 p.m.



a.m.



p.m.

How long did it take the worker to clean the conveyor? Provide your answer in hours and minutes.

Answer: hour and minutes

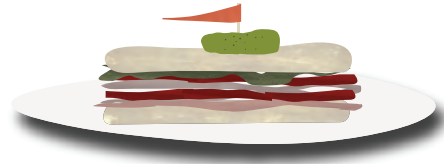


Question 8:

A server at a deli wants to know the average number of sandwiches sold each day. He checks the sales records for the previous week, shown below.

*Sandwich sales for
the week of January 3rd*

Sunday	4
Monday	10
Tuesday	4
Wednesday	5
Thursday	9
Friday	14
Saturday	17



What is the average number of sandwiches sold each day?

Answer: sandwiches

Question 9:

A cashier is preparing to return unsold magazines to the supplier for a refund. To calculate the total amount of the refund, the cashier uses the information in the following Return Form:

Magazine Return Form			
Magazine	Item Cost	Number to return	Sub Total
Fashion Quarterly	\$8.99 each	13 copies	
Build-it	\$2.99 each	16 copies	
Recipes for U	\$2.00 each	17 copies	
Total Refund			

What is the total amount of the refund?

Answer:



Question 10:

A farm worker needs to find out which supplier offers the best deal on fertilizer. The worker calls four suppliers and obtains the following information:

Jerry's Food Farm:	\$ 3.00/20kg bag
Chicken Run:	\$ 7.50/50kg bag
Free Range Compost:	\$ 9.00/75kg bag
Mud Farm:	\$ 13.00/100kg bag

Based on the information above, which supplier offers the lowest price per kilogram?

Answer:

Notes: