

---

**The Social & Economic Landscape  
for Bridging the Gap:  
From Education to Employment, Pilot Phase II**

---



**Burgeo**

***Prepared by***  
Hollett & Sons Inc.

***Date:***  
September 2003

# Table of Contents

Introduction .....	1
Population.....	1
Educated People.....	2
Level of Education—Total population.....	2
Level of Education by Gender.....	3
Literacy Issues .....	4
Percentage of High School Enrolments that Graduate.....	4
Skill Set Training.....	5
Self Reliant People.....	6
Employment Insurance Incidence .....	6
Social Assistance Incidence .....	6
Other Social & Economic Public Interventions Families & Individuals Rely Upon.....	6
Prosperous People.....	8
Labour Force Having Employment Annually.....	8
Unemployment Rate .....	8
Proportion of Employment .....	9
Households Living in Poverty .....	10
People Living within Sustainable Communities/Zones.....	11

## Introduction

---

This document that you hold in your hands is ***The Social and Economic Landscape for Bridging the Gap, Pilot Phase II—Burgeo***. It is a key part of the evaluation of the Bridging the Gap (BTG) program. It seeks to describe the social and economic state of the communities which are taking part in this phase of the BTG pilot. It does this with the goal of allowing the Evaluation Subcommittee and the External Evaluator to better understand the broad picture of the social and economic opportunities and issues that exist in the partnering communities. The document compares information at the community, zonal, and provincial level in order to get at the larger picture. The information is further divided into 4 headings, drawing upon the analytical framework of the Strategic Social Plan of Newfoundland and Labrador.

- Educated People
- Self-Reliant People
- Prosperous People
- People Living with Sustainable Communities/Zones

In all cases, the latest available statistical information is referenced, which varies from 1996 to 2001.

To begin the landscape, some basic population information is presented below. Burgeo and Economic Zone 9 have both followed the provincial trend of population decline.

### ***Population***

<b>Population</b>	<b>1986</b>	<b>1991</b>	<b>1996</b>	<b>2001</b>
Burgeo	2,582	2,400	2,095	1,785
Economic Zone 9	28,397	27,437	26,370	23,325
Newfoundland and Labrador	568,275	568,475	551,795	512,930

**Note:** 2001 population figures were estimated based on Statistics Canada's Census Subdivisions (CSD's). For this reason estimates are subject to revision as new information becomes available. Figures may not add to total due to rounding of the underlying data. **Source:** 1986, 1991 & 1996 figures, Newfoundland & Labrador Zone Profiles 2000 <http://www.linkproject.nf.ca/profiles/2000.pdf>. All provincial figures, Statistics Canada <http://www.statcan.ca>

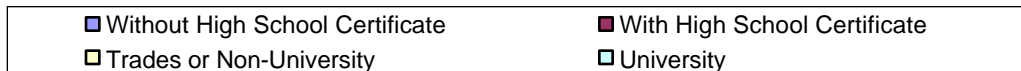
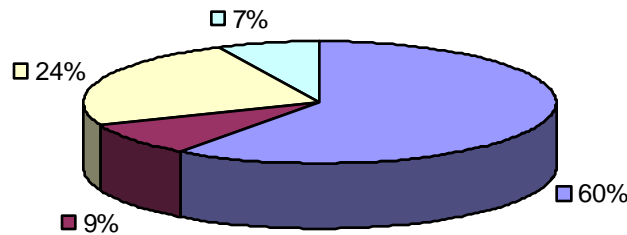
## Educated People

This section presents a description of the area with regard to its educational characteristics. This includes looking at levels of formal education such as high school, college and university, as well as touching on issues such as literacy and skills training. It is also concerned with how these issues intersect with gender and employment characteristics.

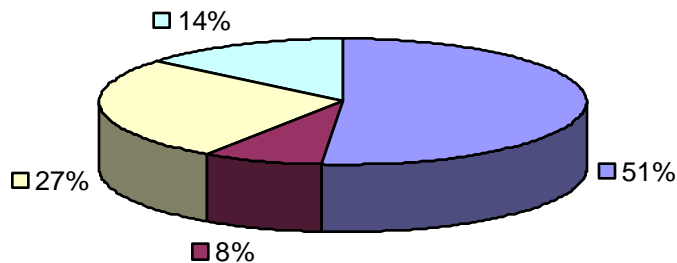
### ***Level of Education—Total population***

Comparing the three graphs below, we can see that Burgeo has a significant percentage of people without a high school education—only slightly higher than the Economic Zone, but 13% higher than the provincial average. The proportion of individuals with high school or trade school certificates is comparable across all three regions, but Burgeo and Economic Zone 9 also have significantly lower numbers of people with university educations compared to the provincial average.

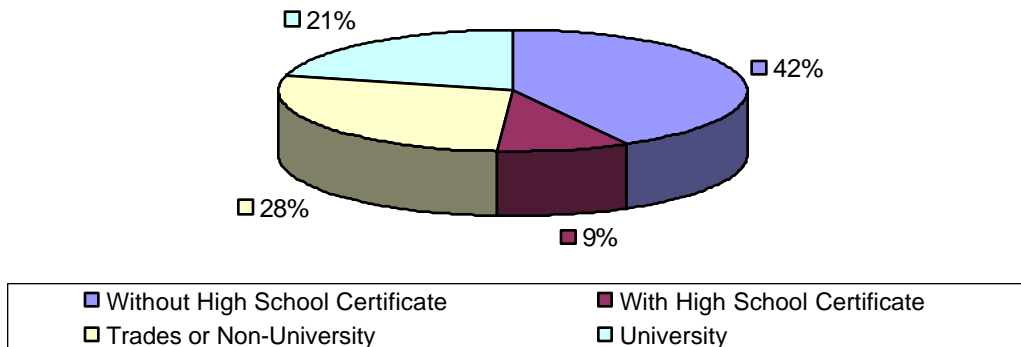
**Level of Education - Burgeo**



**Level of Education - Economic Zone 9**



### Level of Education - NF & LB



### Level of Education by Gender

Burgeo	Males	Females
Without High School Certificate	56%	65%
With High School Certificate	7%	11%
Trades or Non-University	28%	18%
University	8%	7%

Economic Zone 9	Males	Females
Without High School Certificate	50%	52%
With High School Certificate	7%	10%
Trades or Non-University	31%	23%
University	13%	16%

Newfoundland & Labrador	Males	Females
Without High School Certificate	42%	43%
With High School Certificate	9%	10%
Trades or Non-University	29%	26%
University	20%	22%

Figures may not add to totals due to random rounding. \*Includes those individuals with a university certificate and/or diploma below a bachelor's degree. **Source:** Compiled by the Community Accounts Unit based on custom tabulations from the Census of Population 2001, Statistics Canada.

65% of females and 56% of males in Burgeo do not have their high school certificate, a significant gender gap between the two community based populations. Further, this is 14-20 percentage points higher than the provincial average and also considerably higher than the zonal average. There is a 10% gender gap between the males with a Trades or Non-University post-secondary education (28%) and the females (18%).

### ***Literacy Issues***

The government has not conducted any formal survey of literacy in the last nine years. Currently, the Provincial Department of Education recommends using educational attainment (which is closely correlated to literacy levels as it assumes a certain degree of literacy based on achieving certain educational levels) as a measure of adult literacy levels. Educational Attainment levels for Burgeo (as indicated above) are slightly lower than both the zonal and the provincial averages, indicating a lower than average literacy level. The trends for the future may be found by looking at the current high school enrollments and pass rates for the School District, as below.

### ***Percentage of High School Enrolments that Graduate Enrolment 2000-2001***

<b>Cormack Trail School District</b>	
<b>Senior high Total</b>	1,653
Grade 10	589
Grade 11	510
Grade 12	517
Fourth year <sup>a</sup>	37

<sup>a</sup> Fourth year students are those who attended senior high school for at least three years. Figures include all schools located in the area, including francophone, private, first nation and other schools. Education Accounts, Enrolment, 1989-2002, Cormack Trail School District. **Source:** Compiled by the Community Accounts Unit based on information provided by the Department of Education, K-12 School Profile System.

### ***Pass Rates – June 2001***

	Males	Females	Total
<b>Cormack Trail School District</b>	86.5	89.0	87.8

Education Accounts, High School Pass Rates, June 2001, School Districts. **Source:** Compiled by the Community Accounts Unit based on information from the Department of Education.

Taking the total number of enrollees in Senior High School combined with the Pass Rates for 2001, we can determine that 1,451 of those will pass to their next year, and that 486 of those passing will be completing their senior year (or their 'fourth year') and receive their high school certificate. Thus the Cormack Trail School District graduates approximately 486 students per year.

By way of comparison, the table below presents the pass rates for all school boards in the province. The Cormack Trail School District is one of the highest with an 87.8% pass rate. The highest is Avalon West with a 91.2% pass rate.

### Pass Rates—June 2001

School District	Males	Females	Total
Labrador	84.5	93.2	88.9
Northern Peninsula/Labrador South	73.1	84.6	78.6
Corner Brook/Deer Lake/St. Barbe	79.8	93.3	86.8
<b>Cormack Trail</b>	<b>86.5</b>	<b>89.0</b>	<b>87.8</b>
Baie Verte/Central/Connaigre	78.3	91.1	84.6
Lewisporte/Gander	79.8	88.9	84.4
Burin	86.2	91.3	89.0
Vista	85.7	92.1	89.0
Avalon West	87.2	94.8	91.2
Avalon East	80.1	87.4	83.8

**Source:** Compiled by the Community Accounts Unit based on information from the Department of Education.

### Skill Set Training

Skill Set training is an important element of employment, particularly within industry, as the following trends suggest.

- According to Newfoundland Statistics, the industrial sector is growing at an estimated rate of 2% per year (600 people), and the retirement rate is approximately 4% per year (1,200 people), introducing a 6% increase in demand for human resources annually.
- Currently 8.5% of high school graduates enter industrial training programs. As the number of graduates shrink and the need for industrial sector workers increases, the estimate is that 40% of high school graduates will be required to enter the industrial sector in 10 years.

Source: Canadian Manufacturers and Exporters, 2002/2003 Budget Submission, Innovation and High Level Job Creation, <http://www.cme-mec.ca/shared/upload/2002-03%20Prebudget%20Submission.pdf>

Provincial, national and international trends indicate that new job opportunities are increasingly tied to educational attainment. In this Province, those with a post secondary degree, certificate or diploma accounted for 55% of total employment in 1999, up from 45% at the beginning of the decade.

Conversely, those with less than high school accounted for 20% of employment in 1999 as compared to 29% in 1990. Those with high school completion or with some post-secondary studies accounted for about 25% to 27% of total employment over the decade.

Unemployment rates also appear to be correlated with educational attainment. In this Province, the unemployment rate for those with post secondary completion was 11.9% in 1999 (5.1% for university graduates), as compared to 18.2% for high school graduates and those with some post secondary, and 27.0% for those with less than high school completion.

Source: Labour Market Trends, Newfoundland and Labrador, Annual 2000 All analysis based on Statistics Canada's Labour Force Survey [http://www.economics.gov.nf.ca/pdf/LMT/LFS\\_Q4\\_2000.PDF](http://www.economics.gov.nf.ca/pdf/LMT/LFS_Q4_2000.PDF)

## Self Reliant People

---

This intent of this section is to better understand the level of community self-reliance by examining the level of transfer payments going into the area. In this case, self-reliance refers to the ability of an area to sustain itself without outside financial output. By examining the different public interventions upon which that the area relies, we can get a picture of the level of non-dependence in an area.

### ***Employment Insurance Incidence***

<b>Employment Insurance Incidence 1998</b>	
Burgeo	37.1%
Economic Zone 9	42.0%
Newfoundland & Labrador	38.1%

The Employment Insurance data reported here includes only claims related to job loss and fishing activity. All other types of claims are excluded (maternity leave, sickness, parental/adoption, work sharing, job creation, training and self-employment). Figures may not add to totals due to random rounding.

### ***Social Assistance Incidence***

<b>Social Assistance Incidence 1998</b>	
Burgeo	18.6%
Economic Zone 9	29.3%
Newfoundland & Labrador	16.3%

**Source:** Compiled by the Community Accounts Unit based on information provided by the provincial Department of Human Resources and Employment.

Employment Insurance and social assistance payments are two of the most common forms of transfer payments upon which individuals rely. Looking at the above charts, we can see Burgeo area has much lower rate of EI and social assistance payments than the economic zone, with statistics that are comparable to provincial norms. The most significant difference is in the area of Social Assistance payments, with an approximately 11% greater incidence in the Economic Zone than in Burgeo.

### ***Other Social & Economic Public Interventions Families & Individuals Rely Upon***

Other transfer payments which play a role in family incomes include:

- Old Age Security
- Canada Pension Plan
- Child Tax Benefit
- GST Credit
- Workers Compensation
- Provincial Tax Credit

The most common forms of payment in the Burgeo area are Old Age Security and Canada Pension Plan payments each of which impacts over 1,000 residents in the area. The others each affect less than 400 residents in the area. The chart below indicates overall levels of transfer payments, including EI, Social Assistance, and NCARP/TAGS payments (which were in effect in 1999).



<b>Transfer Payments-1999</b>		
Burgeo	Number Reporting	1,280
	% of Population (2001)*	72%
Economic Zone 9	Number Reporting	15,140
	% of Population (2001)	65%
Newfoundland & Labrador	Number Reporting	306,730
	% of Population (2001)	60%

**Source:** Compiled by the Community Accounts Unit, based on Canada Customs and Revenue Agency summary information as provided by Small Area and Administrative Data Division, Statistics Canada. \*2001 population figures are the closest available population figures. Some distortion may result.

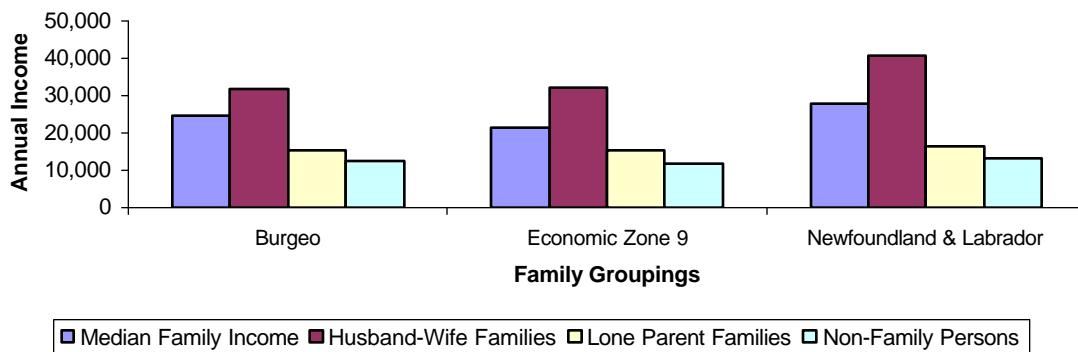
As the chart above demonstrates, a substantial number of people in each region receive some form of transfer payment as part of their income. The Burgeo and Economic Zone 9 figures are higher than the provincial figures, notably so in the case of Burgeo.

## Prosperous People

This section presents information primarily concerned with incomes and employment. Although related to self-reliance, it is more a measure of the *quality* of life (in a limited economic sense) in an area as opposed to its self-sufficiency.

As the graph below indicates, the Burgeo area has incomes across the board comparable to those in the Economic Zone, but lower, particularly in the realm of husband-wife families, when compared to the province. This is probably linked to the lower employment rates noted in the charts below.

### Average Annual Household Income



### Labour Force Having Employment Annually

Census - Labour Markets, 1995-96: Labour force (May 1996): Employment rate	Prime Labour Force Age	Age 15 and Over
Burgeo	36%	25%
Economic Zone 9	46%	33%
Newfoundland & Labrador	58%	42%

**Source:** Compiled by the Community Accounts Unit based on custom tabulations from the Census of Population 1996, Statistics Canada.

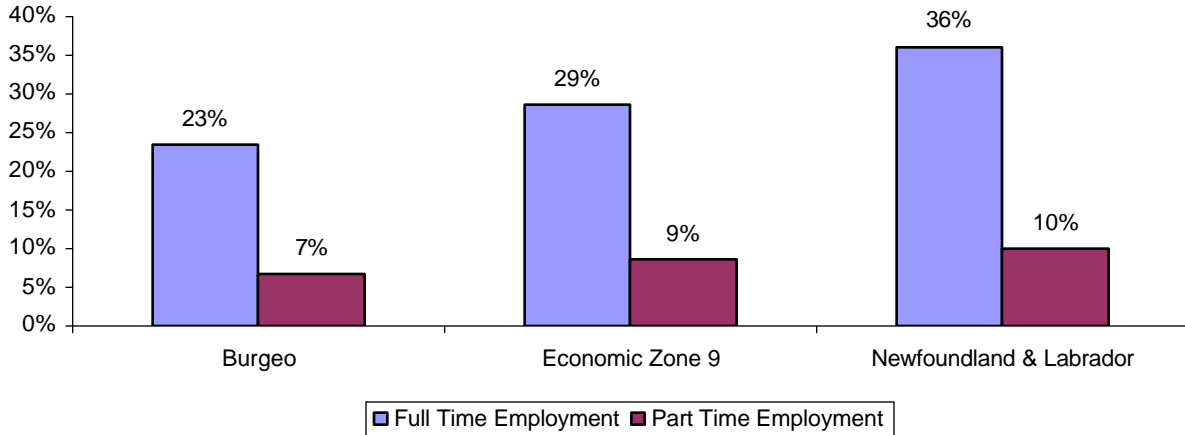
### Unemployment Rate

Census - Labour Markets, 1995-96: Labour force (May 1996): Unemployment rate	Prime Labour Force Age	Age 15 and Over
Burgeo	39.7%	41%
Economic Zone 9	30.9%	33%
Newfoundland & Labrador	23%	25%

**Proportion of Employment**

The proportion of employment charts below reflect the number of full and part time workers as a percentage of total population (thus, the percentages do not add to 100). Burgeo has comparable proportions of people with part-time employment (working less than 30 hours per week), but significantly lower proportions of people working full-time.

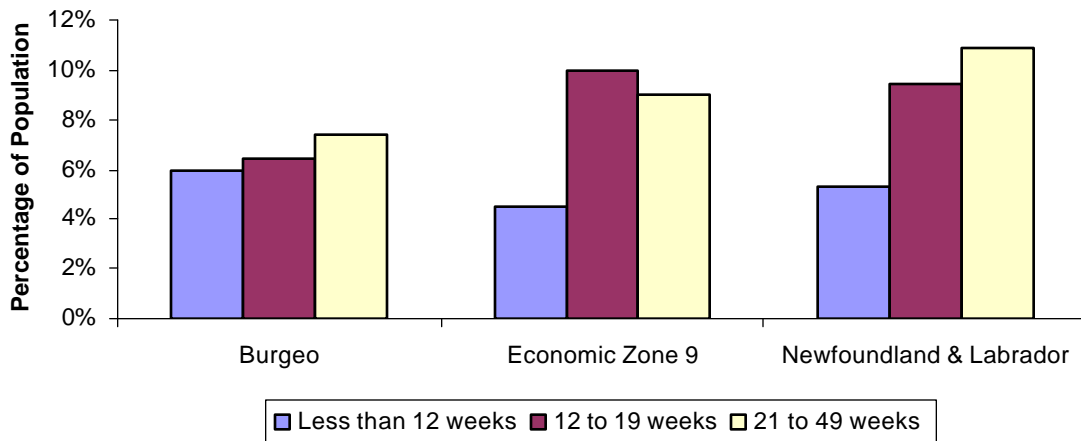
**Proportion of Employment - Burgeo**



**Seasonal Employment**

The distribution of weeks among seasonally employed workers in Burgeo communities are much more even than the zonal and provincial figures, with the notable difference of a much greater number of people employed between 12 and 19 weeks of the year in the Economic Zone.

**Seasonal Employment - Burgeo**



### ***Households Living in Poverty***

Burgeo has a slightly higher percentage of people living below the low-income cut-off when compared to the province, but a notably lower number when compared to the zone.

<b>% Below Low Income Cut-off*</b>	<b>Husband-Wife Families</b>	<b>Lone-Parent Families</b>
Burgeo	19%	n/a
Economic Zone 9	25%	64%
Newfoundland & Labrador	16%	52%

\*Estimated using Statistics Canada's Low Income Cut-Offs (1992 base). Extracted from Income Accounts, Distribution of Family Income, 1997, Burgeo, Economic Zone 9, and Newfoundland & Labrador. **Source:** Compiled by the Community Accounts Unit, based on Canada Customs and Revenue Agency summary information as provided by Small Area and Administrative Data Division, Statistics Canada.

## People Living within Sustainable Communities/Zones

This section presents information with regard to the sustainability of communities. One of the key indicators of a sustainable community is a diversified economy.

The graphs below demonstrate the main industries in Burgeo, and the percentage of the population they employ. 'Sales and Service' is the single largest sector, followed by 'Construction and Related.'

**Main Industries - Burgeo**

