

PREPARED FOR SUCCESS

2004-2005

A Study of the Success of Adult Upgrading Graduates in the First Semester of Post Secondary

**Prepared by
College Sector Committee for Adult Upgrading**

September, 2005

OVERVIEW

The initial study published in January 2001 was funded jointly by the National Literacy Secretariat and the Ministry of Training, Colleges and Universities. It examined the post secondary outcomes of students who had moved on from upgrading programs to further education in the college system from the fall of 1995 to January 2000.

This initial study tracked students from post secondary admission through to graduation documenting success both in terms of retention and grade point average. “Students were tracked from the first semester of their studies to graduation, withdrawal or failure. Eighty three percent of these preparatory students graduated.” The 23 % of students who withdrew did so primarily for financial reasons. Sixty three percent of the students who withdrew did so during the first semester of their post secondary studies.

The subsequent annual studies have focused exclusively on first semester results. It was decided to study the first semester to simplify the collection of data and because the initial study demonstrated conclusively that there is a high correlation between first semester success and eventual graduation. The initial study examined enrollment in 6 program categories: Business, General Arts and Sciences, Health, Technology, Trades and Other. Subsequent studies separated Social Services programs from the Other Category. The initial report is available on line at www.collegeupgradingon.ca or by contacting AlphaOntario or your regional network.

2004-2005 Results

PARTICIPATING COLLEGES (Charts 1-4)

The results documented here are for the Spring and Fall 2004, and Winter 2005 semesters.

Student success both in terms of GPA and retention continue to be outstanding. A total of 22 of 23 eligible colleges participated in the study. (St Clair College does not provide post secondary entry level upgrading.) The number of students per college is outlined in chart four of the report. The number of students across the system moving on to post secondary increased from 986 to 1,498. This is an increase of 52%. (Chart 3)

Collecting the data continues to be the most significant challenge to individual colleges. Although the tracking of upgrading students' post secondary enrollment and grades has been computerized at an increasing number of colleges, at many colleges it is a labor intensive task which is accomplished manually.

POST SECONDARY PROGRAM SELECTION

(Charts 6-8)

Participation in a Health Sciences programs continues to be the most popular choice among adult upgrading students. Selection of a Business program is second and Technology is a close third. Selection of a Trades or Skills program continues to be the least popular and has in fact declined significantly since the first study.

Fifty two percent of adult upgrading students enrolling in post secondary select a four semester program. The balance of activity is almost equally split between shorter (1-2 semesters) and longer programs (5-8 semesters). Clearly, the majority of adult upgrading graduates are prepared to make the necessary long term commitment of time required to achieve their educational goals.

MEASURES OF SUCCESS

First Semester Pass Rates (Charts 9 – 16)

The overall pass rate for students in all programs is 83%; 8% withdraw, principally because of financial reasons; 9% do not achieve the GPA required to continue in the program of their choice.

Grade Point Averages (Charts 17 – 23)

The average GPA for successful students by program category varies from a low of 2.82 for students in GAS programs to a high of 4.70 in Trades and Skills. It is worth noting that the average GPA for Health Sciences is 3.20.

Enrollment for Second Semester (Charts 24 – 30)

In all program categories more than 85% of the eligible students enroll for the second semester of their program. Program changes are 1% for all programs.

Conclusion

In terms of retention and GPA, students from adult upgrading programs who move on to post secondary programming are well prepared both academically and personally to succeed. Furthermore, the fact that the majority remain in the program they have chosen indicates adult upgrading programs have helped them make the appropriate program selections.

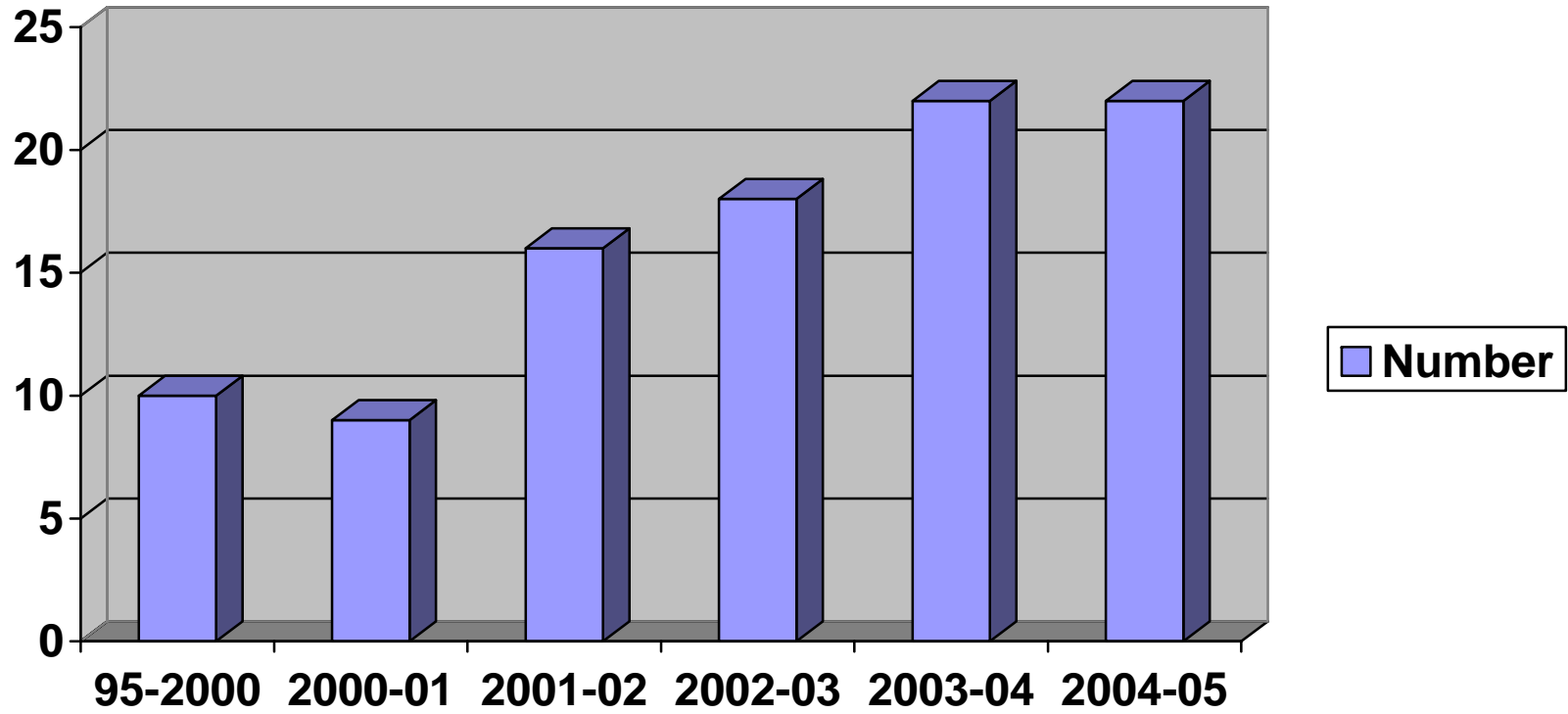
Final Thoughts

The College Sector Committee hopes that this study helps demonstrate to current and potential college upgrading students, college personnel, funders and the community that time spent in college upgrading programs is a guaranteed investment in the future.

The CSC would also like to thank all those managers and support staff who continue to collect this data despite the technical and time barriers which they must overcome.

CHART 1

NUMBER OF PARTICIPATING COLLEGES



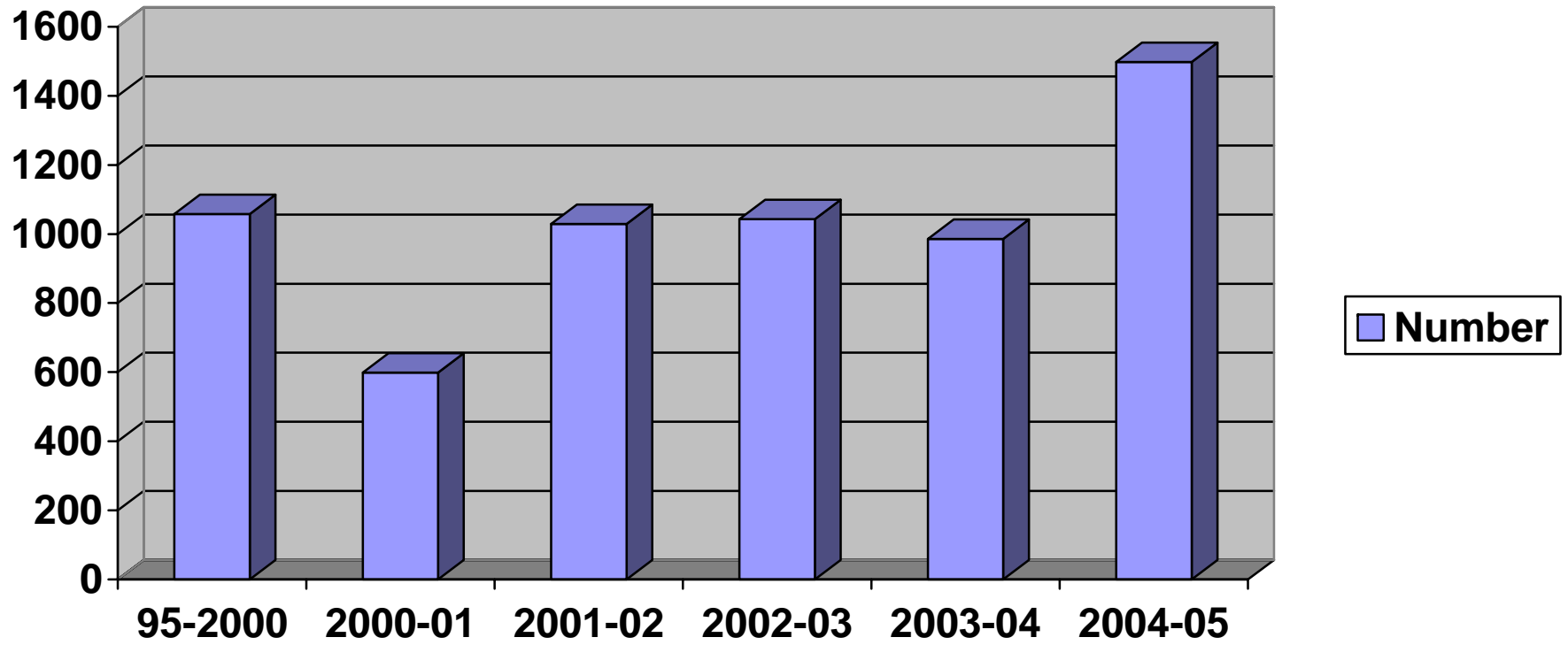
Years	1995-2000	2000-01	2001-02	2002-03	2003-04	2004-05
Number of Colleges	10	9	16	18	22	22

CHART 2**PARTICIPATING COLLEGES**

College	1995-2000	2000-2001	2001-2002	2002-2003	2003-2004	2004-2005
Algonquin				✓	✓	✓
Boreal	✓		✓			✓
Cambrian	✓	✓		✓	✓	✓
Canadore	✓	✓	✓	✓	✓	✓
Centennial				✓	✓	✓
Conestoga	✓	✓	✓	✓	✓	✓
Confederation			✓	✓	✓	
Durham	✓	✓	✓	✓	✓	✓
Fanshawe		✓	✓	✓	✓	✓
Fleming		✓	✓	✓	✓	✓
George Brown					✓	✓
Georgian		✓	✓		✓	✓
Humber		✓	✓	✓	✓	✓
La Cite				✓	✓	✓
Lambton			✓	✓	✓	✓
Loyalist	✓			✓	✓	✓
Mohawk	✓		✓	✓	✓	✓
Niagara	✓		✓	✓	✓	✓
Northern			✓	✓	✓	✓
Sault			✓		✓	✓
Seneca				✓	✓	✓
Sheridan	✓	✓	✓		✓	✓
St. Clair	✓					
St. Lawrence			✓	✓	✓	✓

CHART 3

NUMBER OF STUDENTS COMPARED



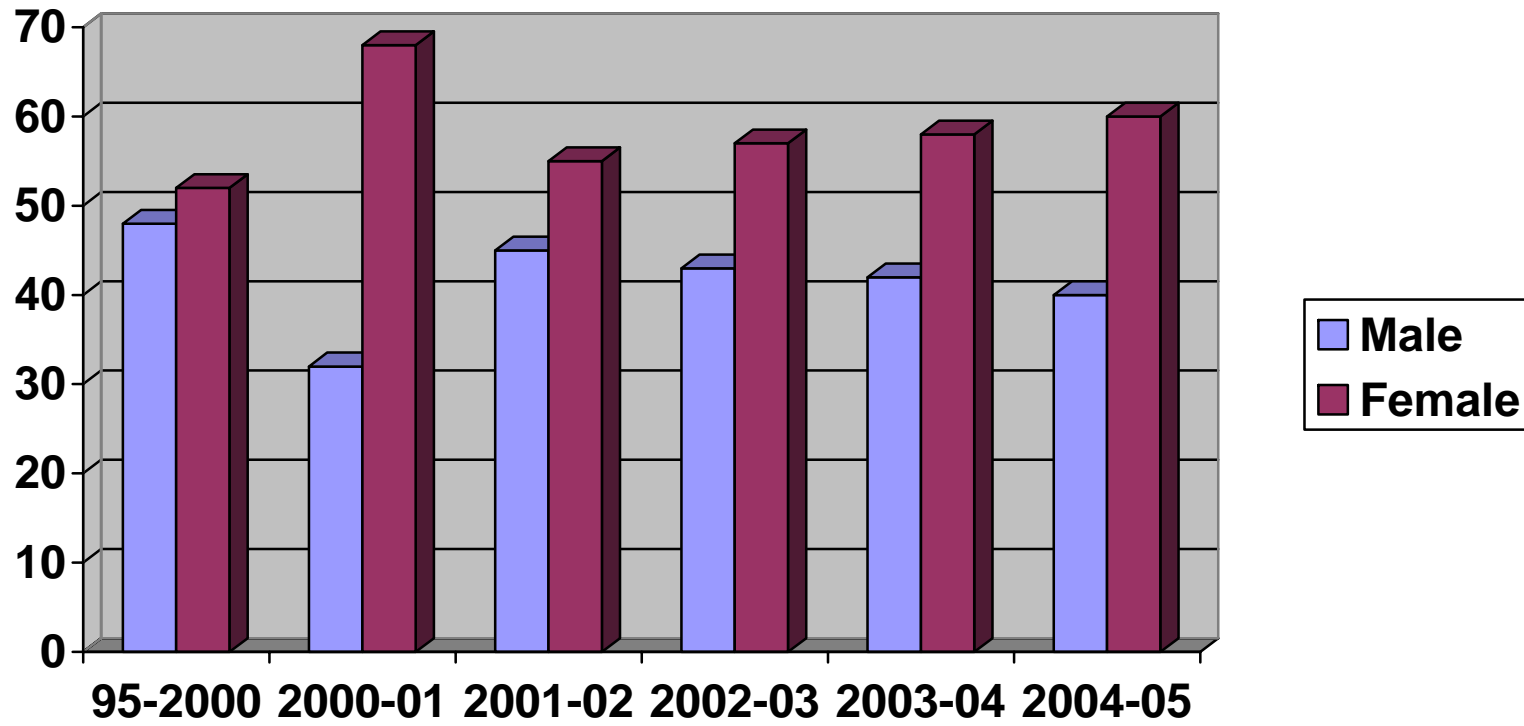
Years	1995-2000	2000-01	2001-02	2002-03	2003 -04	2004-05
Number of students	1058	599	1029	1091	986	1498

CHART 4**NUMBER OF STUDENTS BY COLLEGE**

College	2002 - 2003	2003 - 2004	2004-2005
Algonquin	99	86	322
Boreal	N/A	N/A	65
Cambrian	138	130	202
Canadore	38	30	22
Centennial	37	23	20
Conestoga	65	56	59
Confederation	48	68	Not available
Durham	32	30	71
Fanshawe	42	41	35
Fleming	64	87	124
George Brown	N/A	7	38
Georgian	N/A	43	59
Humber	47	28	32
La Cite	20	32	22
Lambton	9	15	9
Loyalist	16	20	46
Mohawk	206	28	46
Niagara	21	27	20
Northern	97	60	40
Sault	N/A	36	14
Seneca	56	24	136
Sheridan	N/A	43	32
St. Clair	N/A	N/A	N/A
St. Lawrence	56	72	84
TOTAL	1091	986	1498

CHART 5

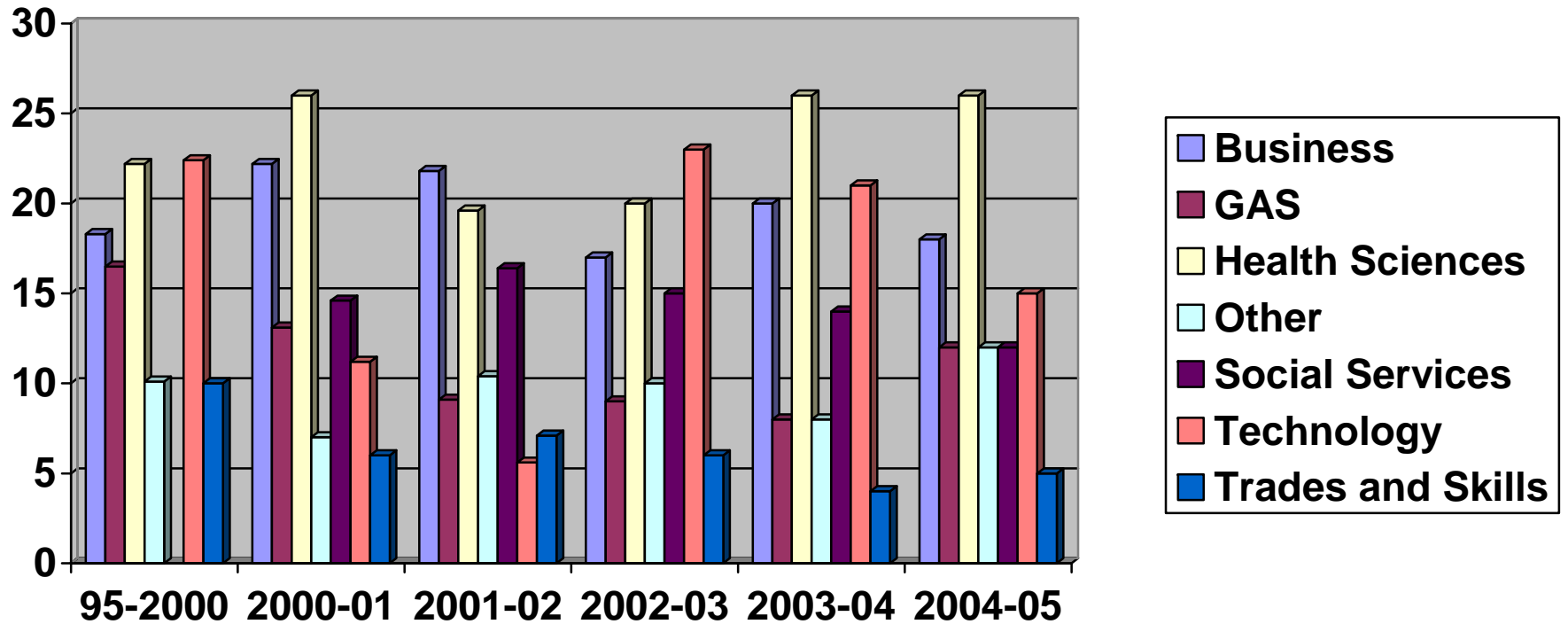
MALE/FEMALE DISTRIBUTION



Years	1995-2000	2000-01	2001-02	2002-03	2003-04	2004-05
Male	48 %	32 %	45 %	43 %	42%	40%
Female	52 %	68 %	55 %	57 %	58%	60%

CHART 6

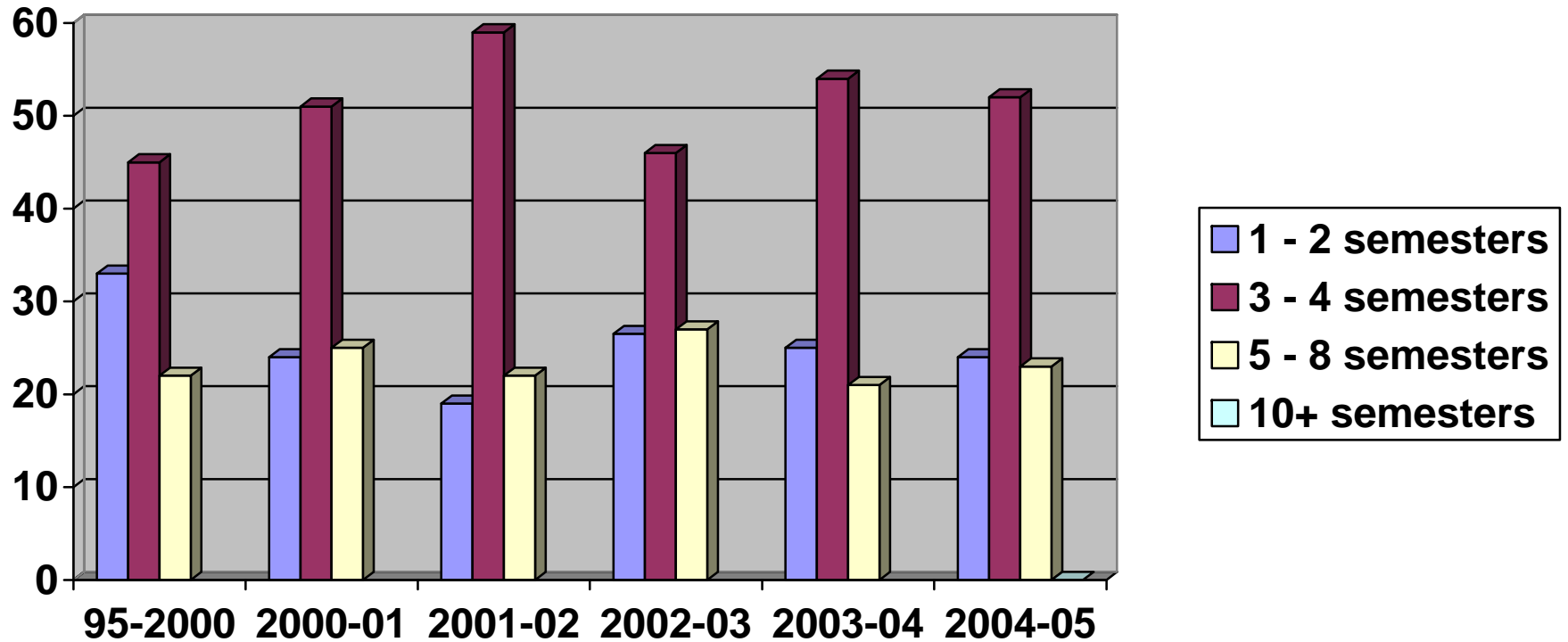
PARTICIPATION BY PROGRAM CATEGORY



Years	1995-2000	2000-01	2001-02	2002-03	2003-04	2004-05
Business	18.3 %	22.2 %	21.8 %	17 %	20%	18%
General Arts & Sciences	16.5 %	13.1 %	9.1 %	9 %	8%	12%
Health Sciences	22.2 %	26 %	19.6 %	20 %	26%	26%
Other	10.1 %	7 %	10.4 %	10 %	8%	12%
Social Services	* included in other	14.6 %	16.4 %	15 %	14%	12%
Technology	22.4 %	11.2 %	5.6 %	23 %	21%	15%
Trades & Skills	10 %	6 %	7.1 %	6 %	4%	5%

CHART 7

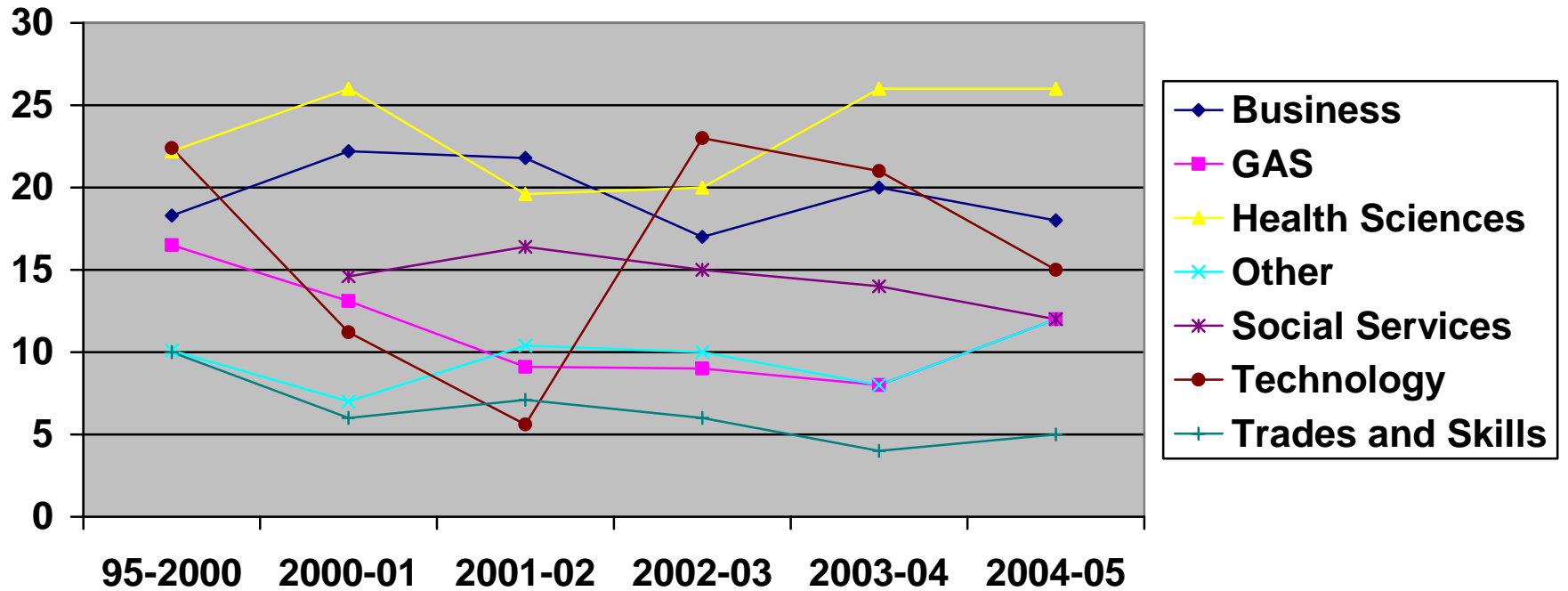
PARTICIPATION BY PROGRAM DURATION



Years	1995-2000	2000-01	2001-02	2002-03	2003-04	2004-05
1 – 2 semesters	33 %	24 %	19 %	26.5 %	25%	24%
3 – 4 semesters	45 %	51 %	59 %	46 %	54%	52%
5 – 8 semesters	22 %	25 %	22 %	27.5 %	21%	23%
10+ semesters						0%

CHART 8

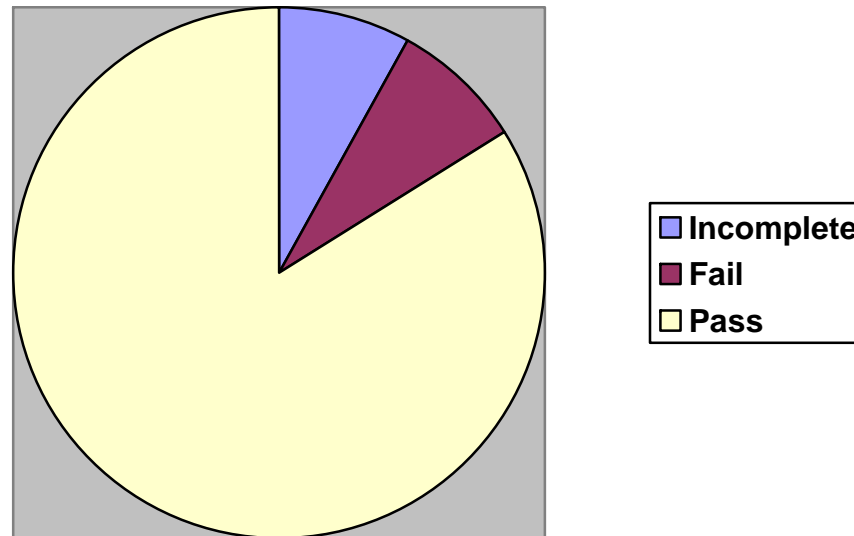
PARTICIPATION BY PROGRAM CATEGORY



Years	1995-2000	2000-01	2001-02	2002-03	2003-04	2004-05
Business	18.3 %	22.2 %	21.8 %	17 %	20%	18%
General Arts & Sciences	16.5 %	13.1 %	9.1 %	9 %	8%	12%
Health Sciences	22.2 %	26 %	19.6 %	20 %	26%	26%
Other	10.1 %	7 %	10.4 %	10 %	8%	12%
Social Services	*included in other	14.6 %	16.4 %	15 %	14%	12%
Technology	22.4 %	11.2 %	5.6 %	23 %	21%	15%
Trades & Skills	10	6 %	7.1 %	6 %	4%	5%

CHART 9

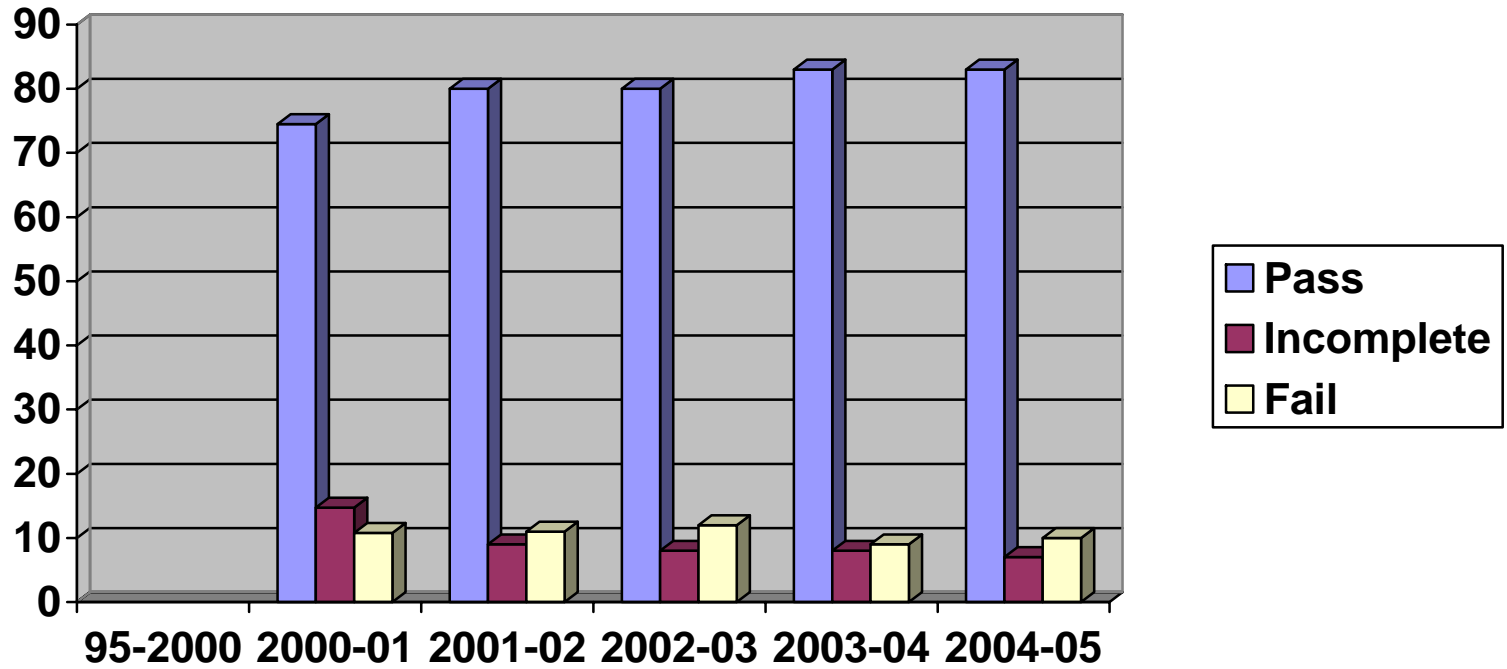
FIRST SEMESTER RESULTS ALL PROGRAMS



Incomplete	8 %
Fail	9 %
Pass	83 %

CHART 10

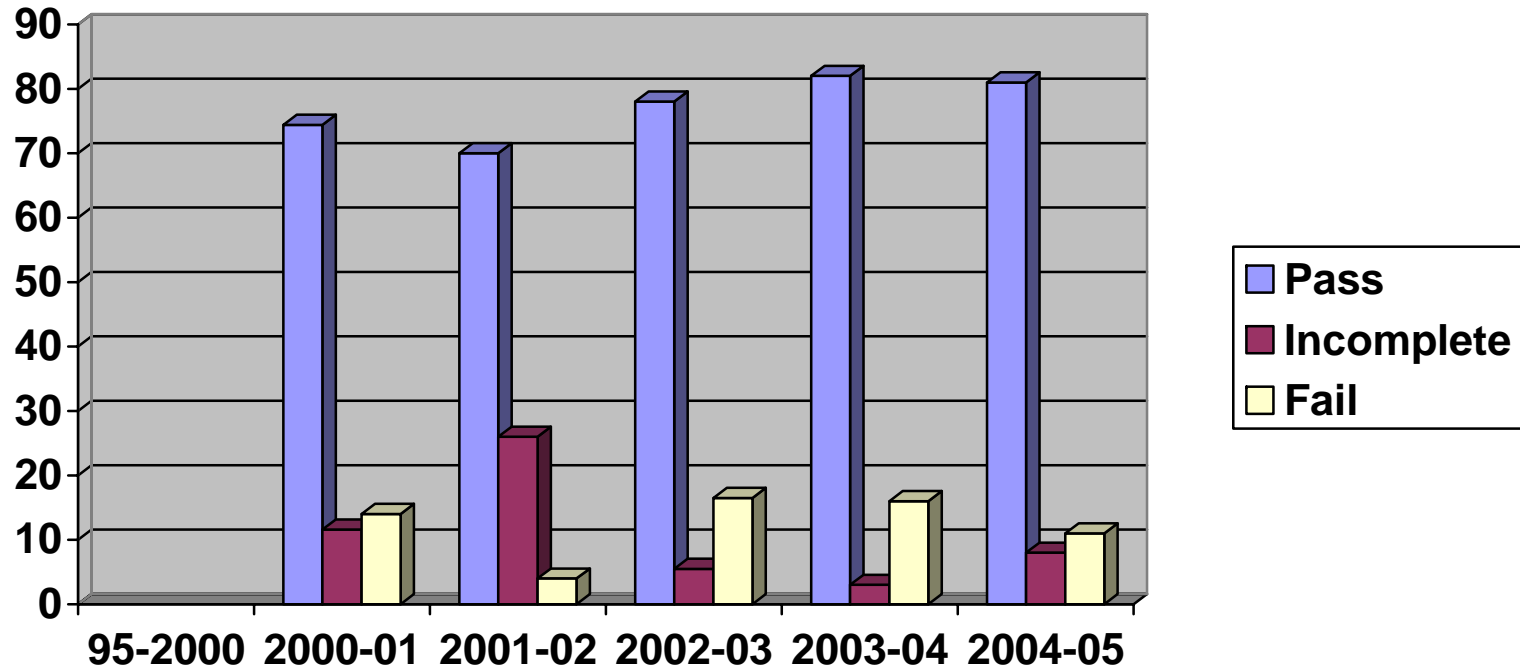
**BUSINESS
1ST SEMESTER RESULTS**



Years	1995-2000	2000-01	2001-02	2002-03	2003-04	2004-05
Pass	N/A	74.5 %	80 %	80 %	83%	83%
Incomplete	N/A	14.7 %	9 %	8 %	8%	7%
Fail	N/A	10.8 %	11 %	12 %	9%	10%

CHART 11

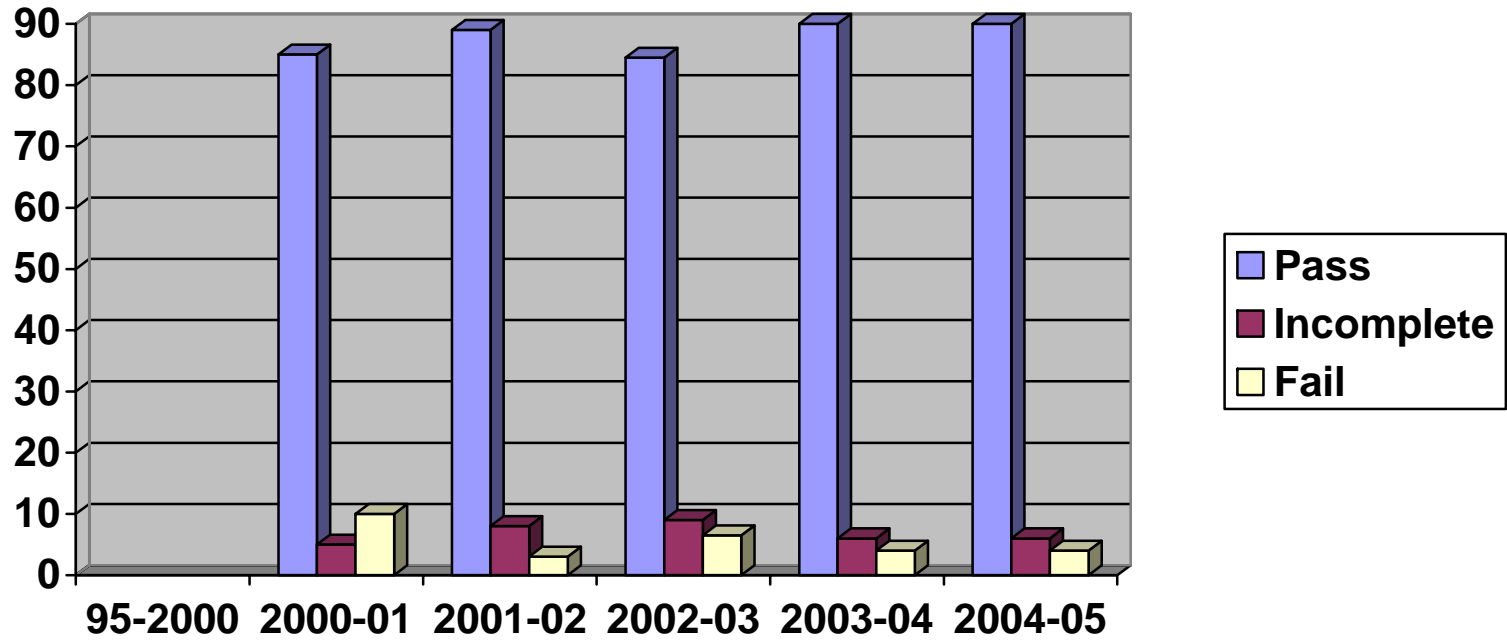
**GENERAL ARTS & SCIENCES
1ST SEMESTER RESULTS**



Years	1995-2000	2000-01	2001-02	2002-03	2003-04	2004-05
Pass	N/A	74.4 %	70 %	78 %	82%	81%
Incomplete	N/A	11.6 %	26 %	5 %	3%	8%
Fail	N/A	14 %	4 %	17 %	16%	11%

CHART 12

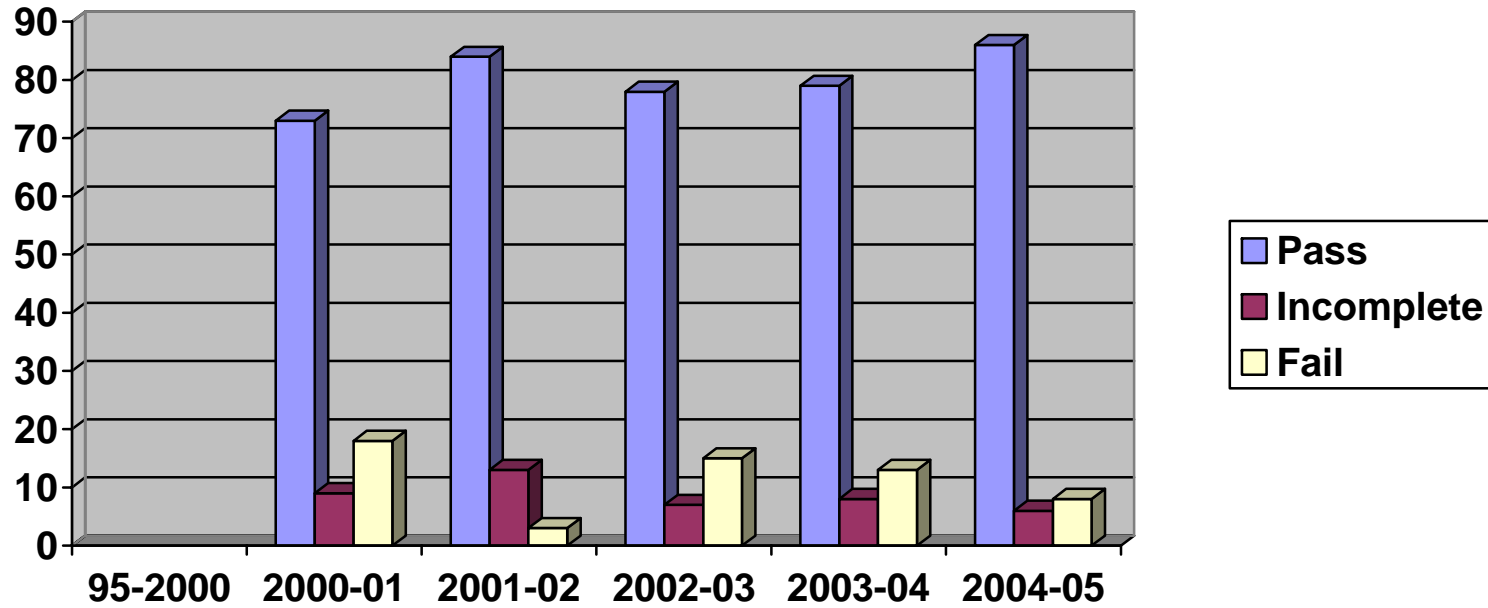
**HEALTH SCIENCES
1ST SEMESTER RESULTS**



Years	1995-2000	2000-01	2001-02	2002-03	2003-04	2004-05
Pass	N/A	85 %	89 %	84 %	90%	90%
Incomplete	N/A	5 %	8 %	9 %	6%	6%
Fail	N/A	10 %	3 %	7 %	4%	4%

CHART 13

**OTHER
1ST SEMESTER RESULTS**

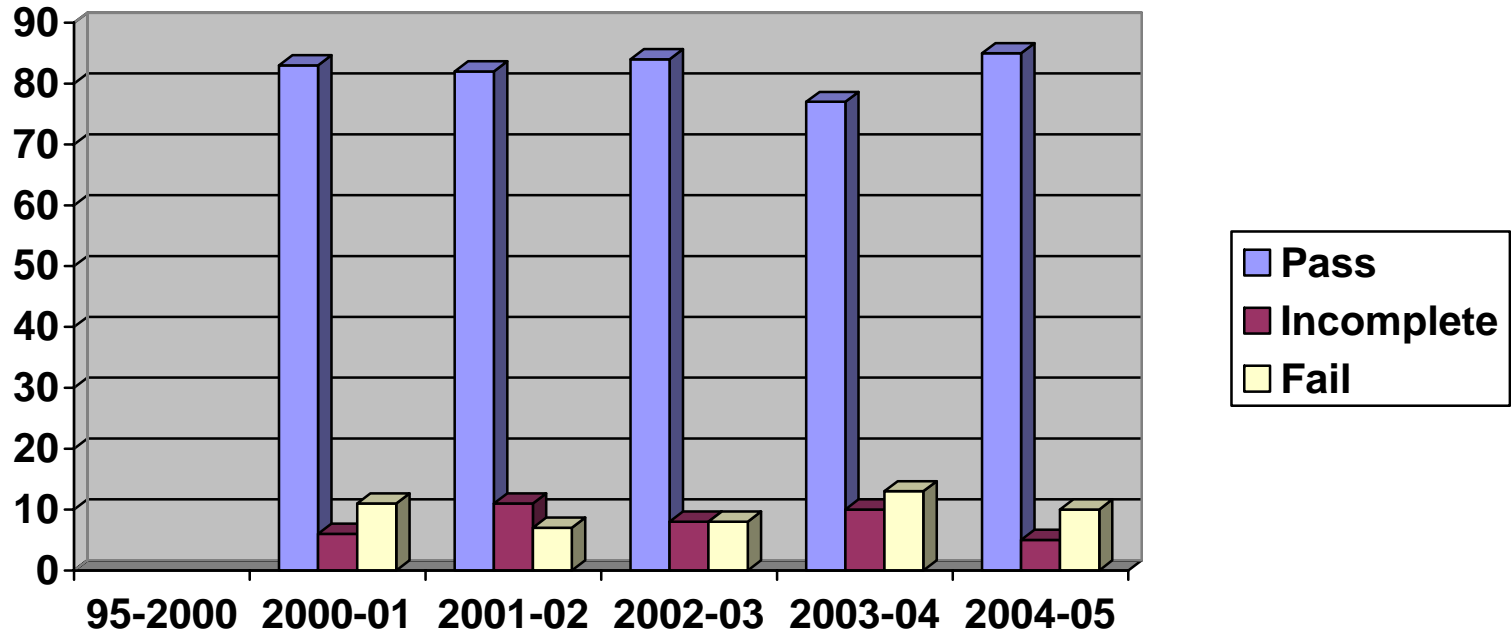


Years	1995-2000	2000-01	2001-02	2002-03	2003-04	2004-05
Pass	N/A	73 %	84 %	79 %	79%	86%
Incomplete	N/A	9 %	13 %	7 %	8%	6%
Fail	N/A	18 %	3 %	14 %	13%	8%

OTHER includes courses related to Culinary Studies, Fashion, Hospitality and Tourism, Media, Sports and Leisure Management

CHART 14

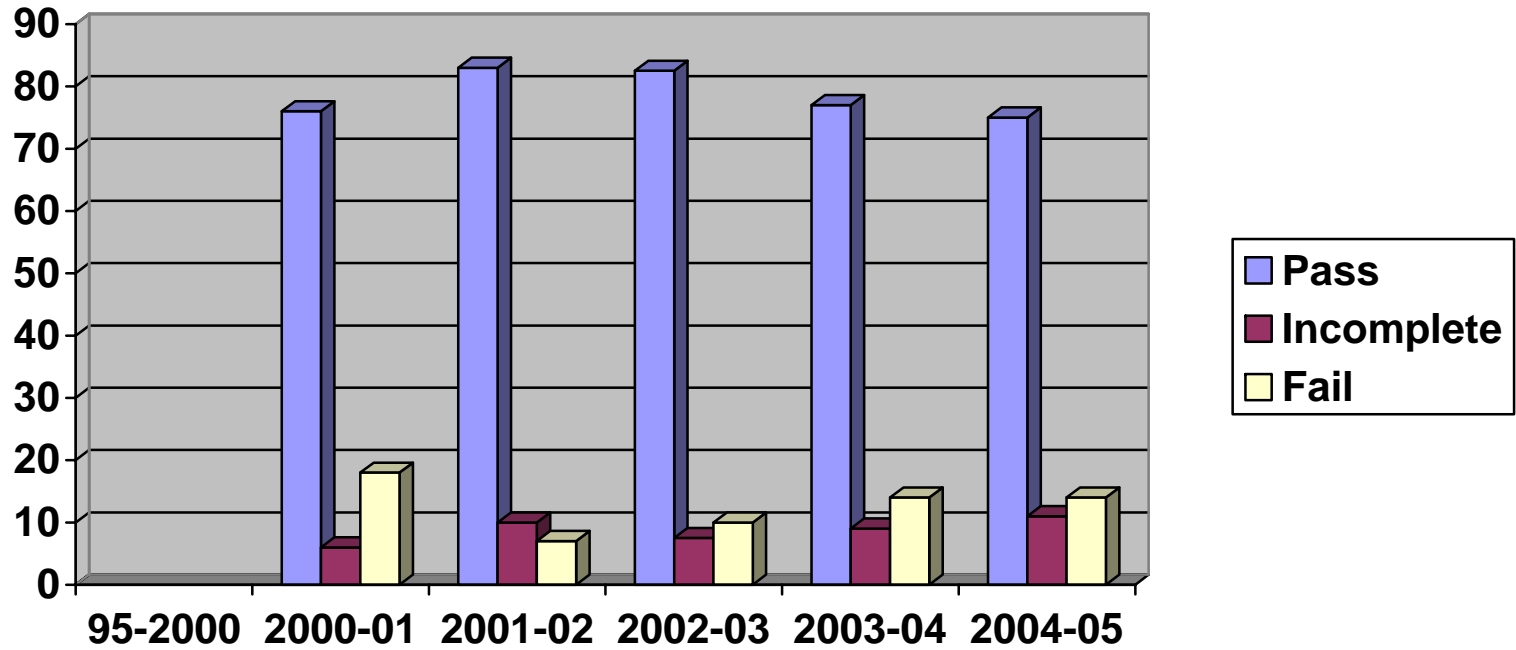
**SOCIAL SERVICES
1ST SEMESTER RESULTS**



Years	1995-2000	2000-01	2001-02	2002-03	2003-04	2004-05
Pass	N/A	83 %	82 %	84 %	77%	85%
Incomplete	N/A	6 %	11 %	8 %	10%	5%
Fail	N/A	11 %	7 %	8 %	13%	10%

CHART 15

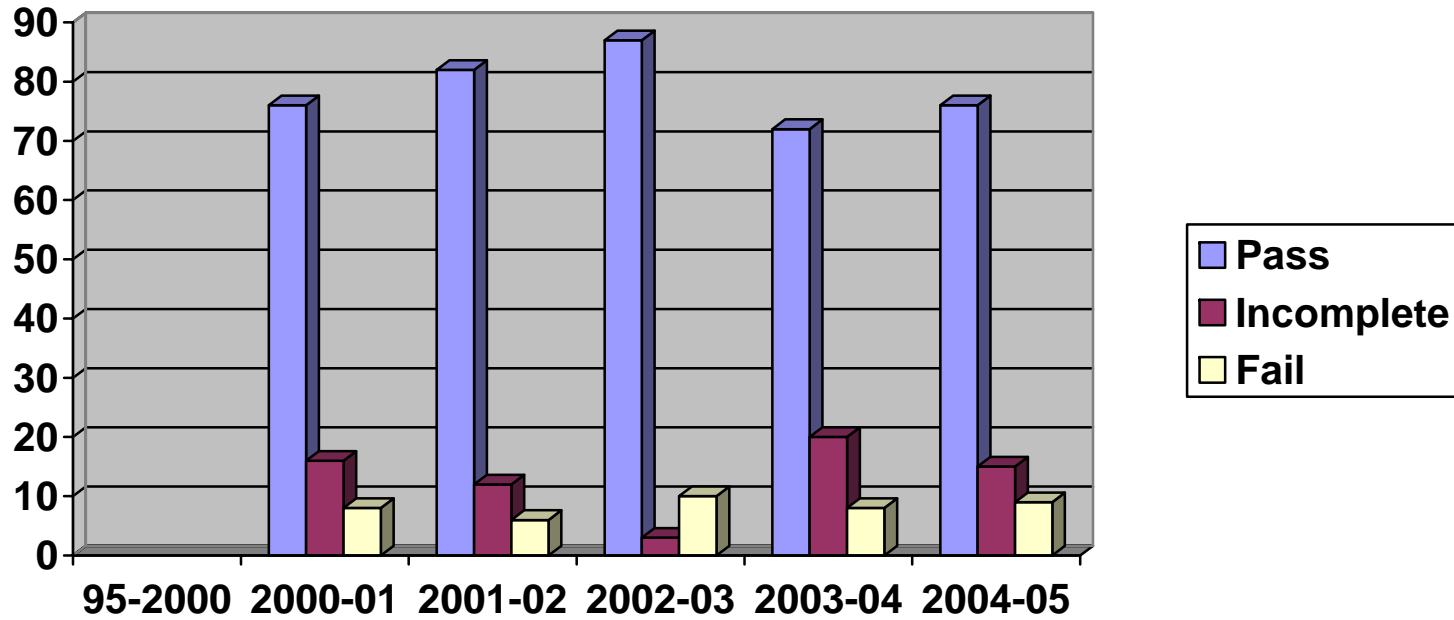
**TECHNOLOGY
1ST SEMESTER RESULTS**



Years	1995-2000	2000-01	2001-02	2002-03	2003-04	2004-05
Pass	N/A	76 %	83 %	82.5 %	77%	75%
Incomplete	N/A	6 %	10 %	7.5 %	9%	11%
Fail	N/A	18 %	7 %	10 %	14%	14%

CHART 16

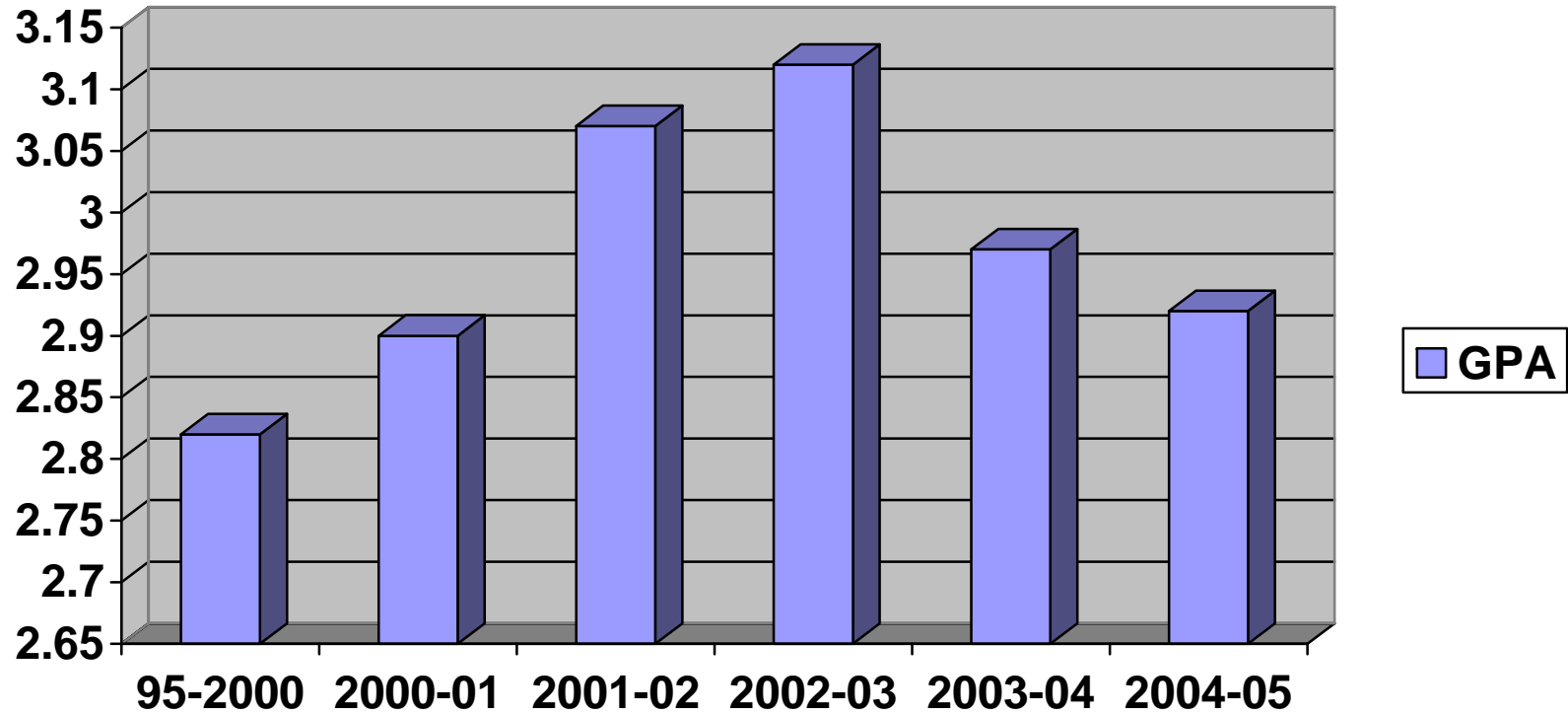
**TRADES & SKILLS
1ST SEMESTER RESULTS**



Years	1995-2000	2000-01	2001-02	2002-03	2003-04	2004-05
Pass	N/A	76 %	82 %	87 %	72%	76%
Incomplete	N/A	16 %	12 %	3 %	20%	15%
Fail	N/A	8 %	6 %	10 %	8%	9%

CHART 17

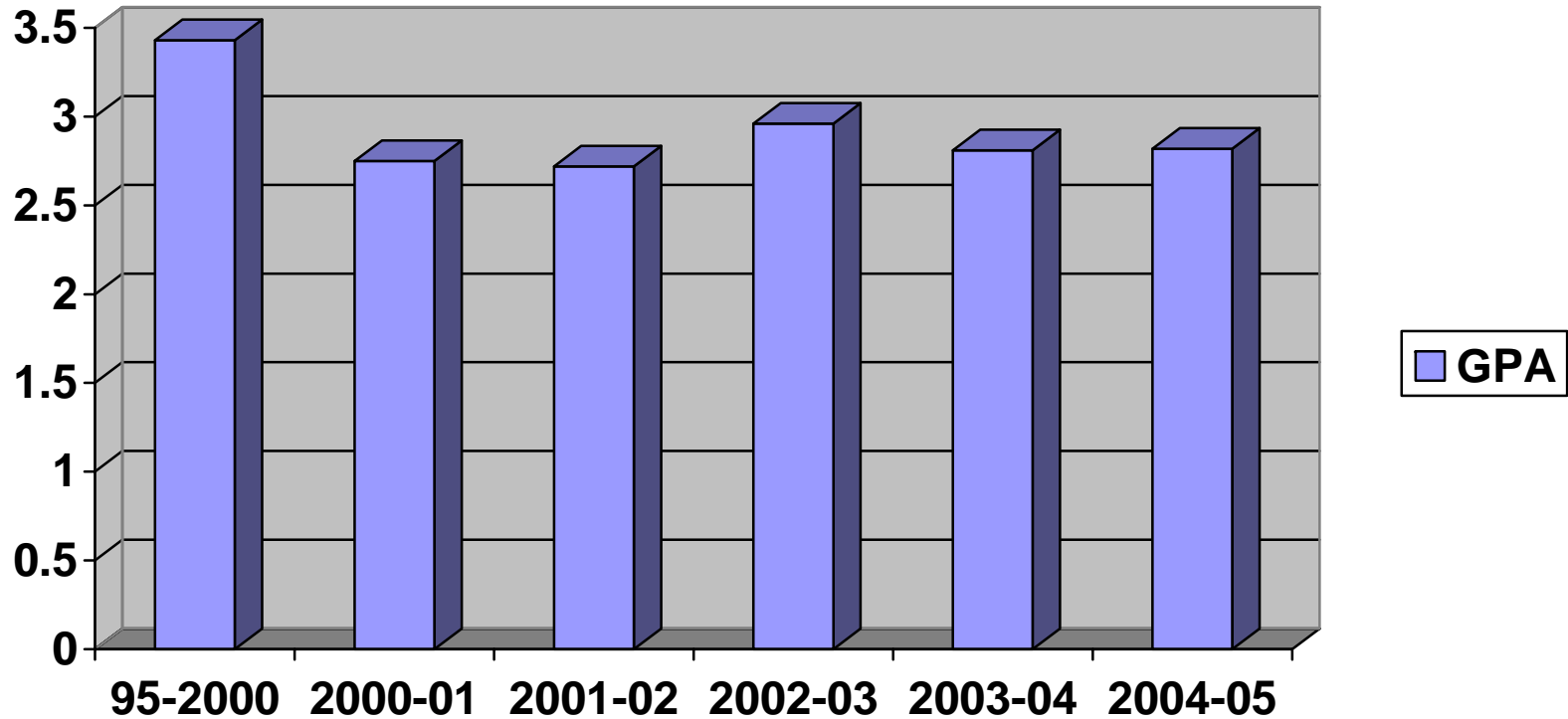
**BUSINESS
GPA END OF FIRST SEMESTER**



Years	1995-2000 (all semesters)	2000-01	2001-02	2002-03	2003-04	2004-05
GPA	2.82	2.9	3.07	3.12	2.97	2.92

CHART 18

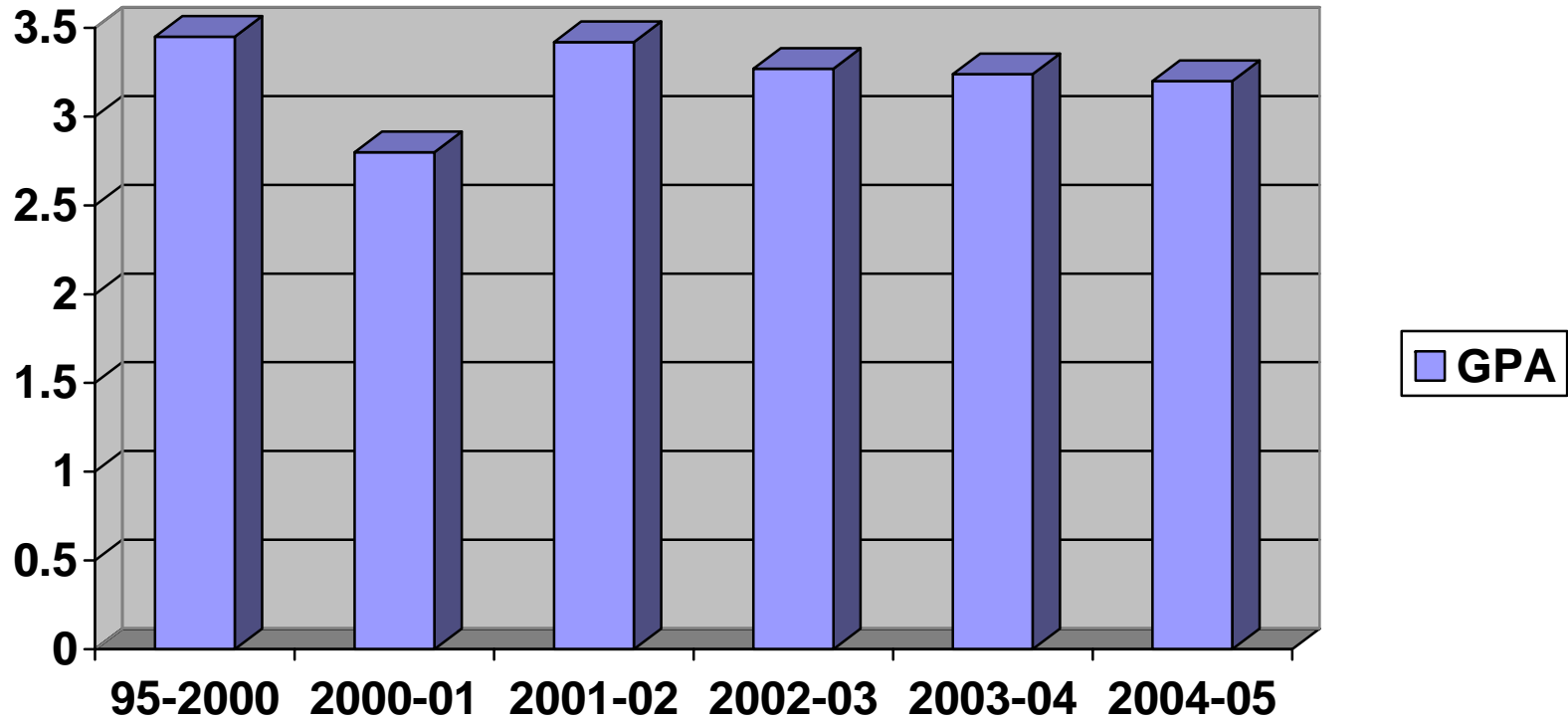
**GENERAL ARTS & SCIENCES
GPA END OF FIRST SEMESTER**



Years	1995-2000 (all semesters)	2000-01	2001-02	2002-03	2003-04	2004-05
GPA	3.43	2.75	2.72	2.96	2.81	2.82

CHART 19

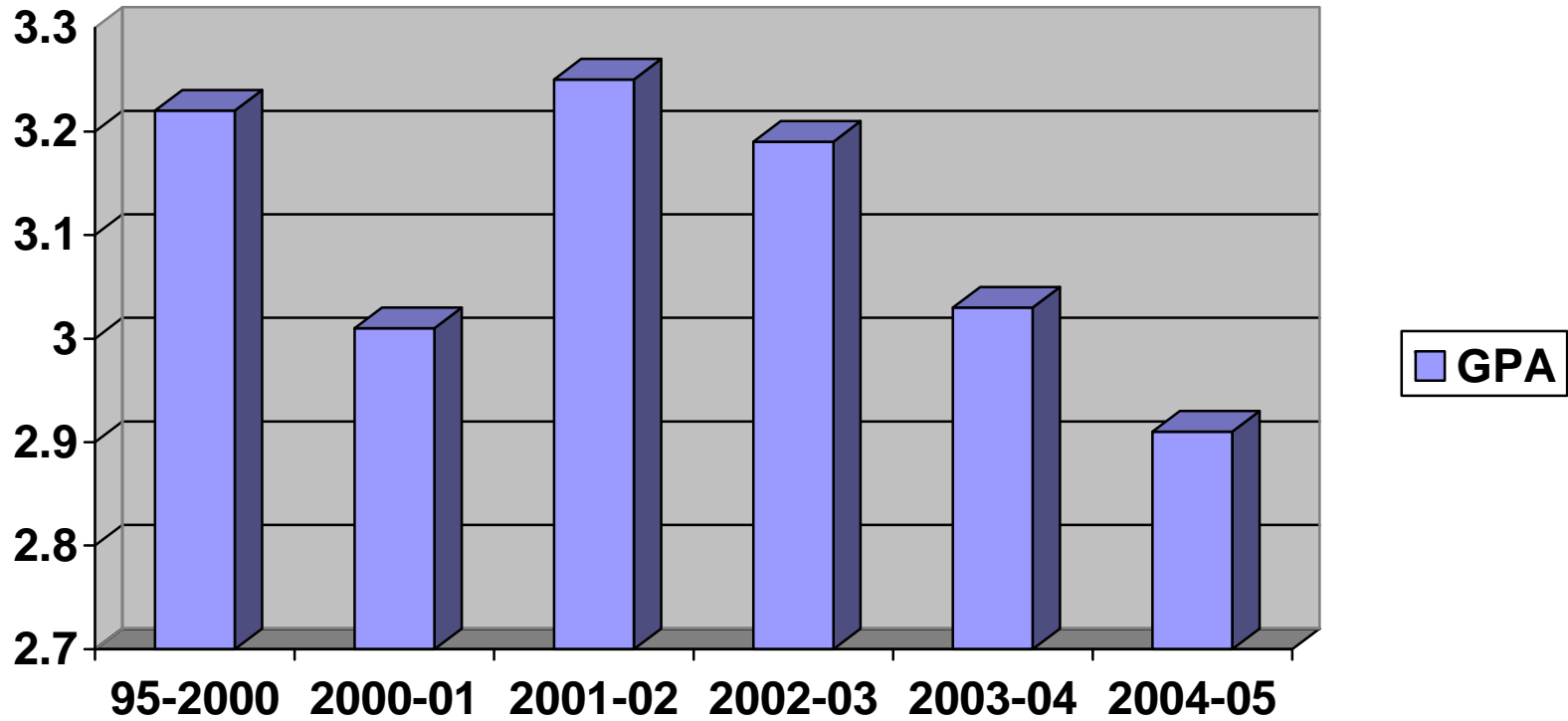
**HEALTH SCIENCES
GPA END OF FIRST SEMESTER**



Years	1995-2000 (all semesters)	2000-01	2001-02	2002-03	2003-04	2004-05
GPA	3.45	2.8	3.42	3.27	3.24	3.20

CHART 20

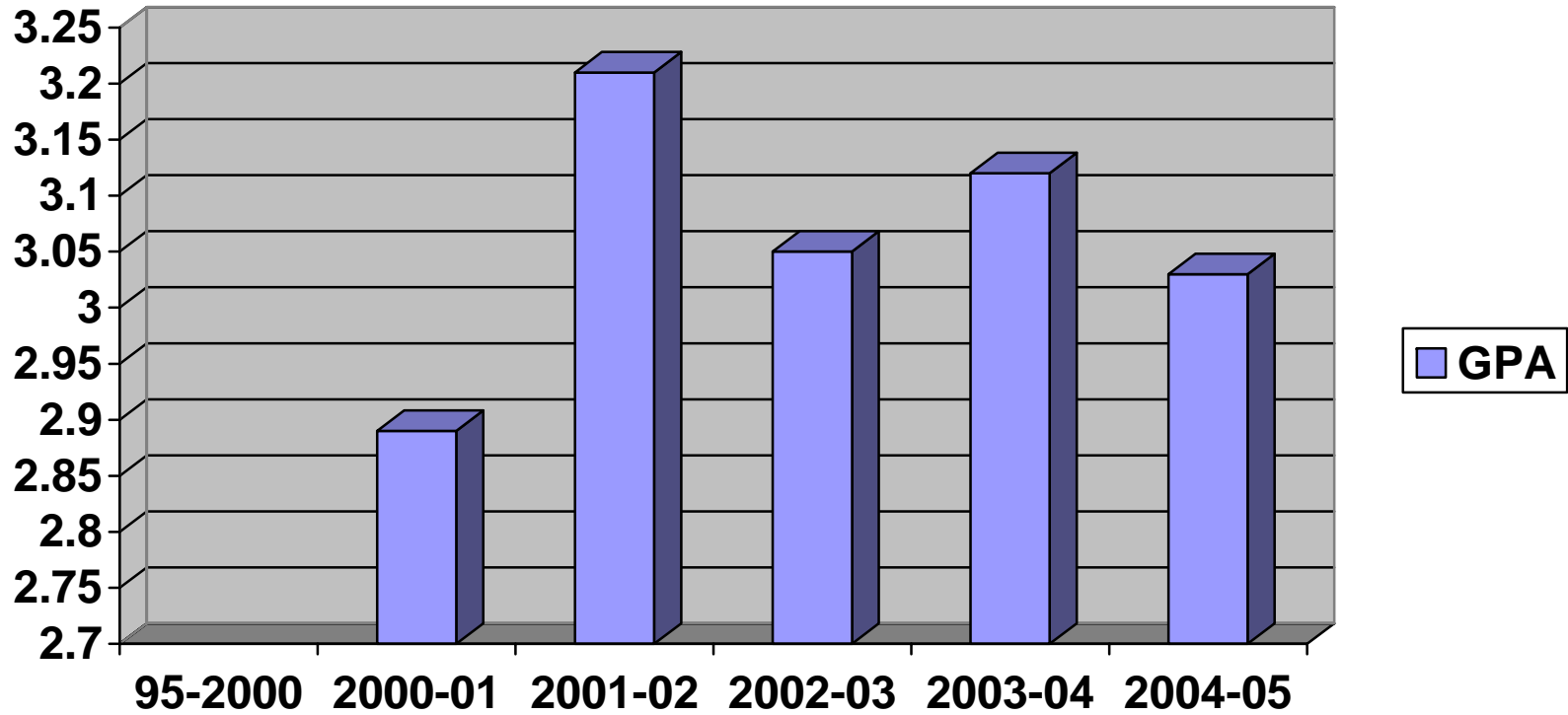
**OTHER
GPA END OF FIRST SEMESTER**



Years	1995-2000 (all semesters)	2000-01	2001-02	2002-03	2003-04	2004-05
GPA	3.22	3.01	3.25	3.19	3.03	2.91

CHART 21

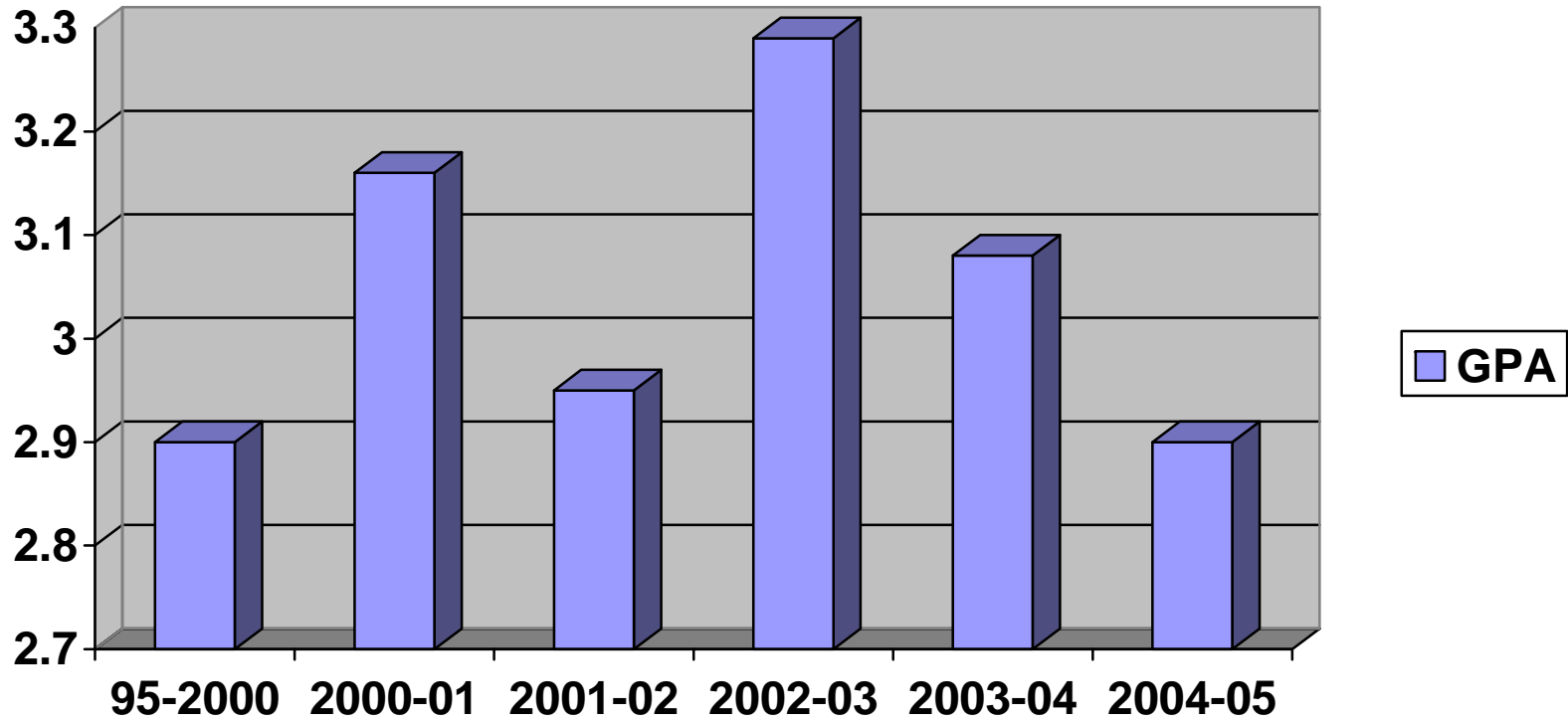
**SOCIAL SERVICES
GPA END OF FIRST SEMESTER**



Years	1995-2000 (all semesters)	2000-01	2001-02	2002-03	2003-04	2004-05
GPA	N/A	2.89	3.21	3.05	3.12	3.03

CHART 22

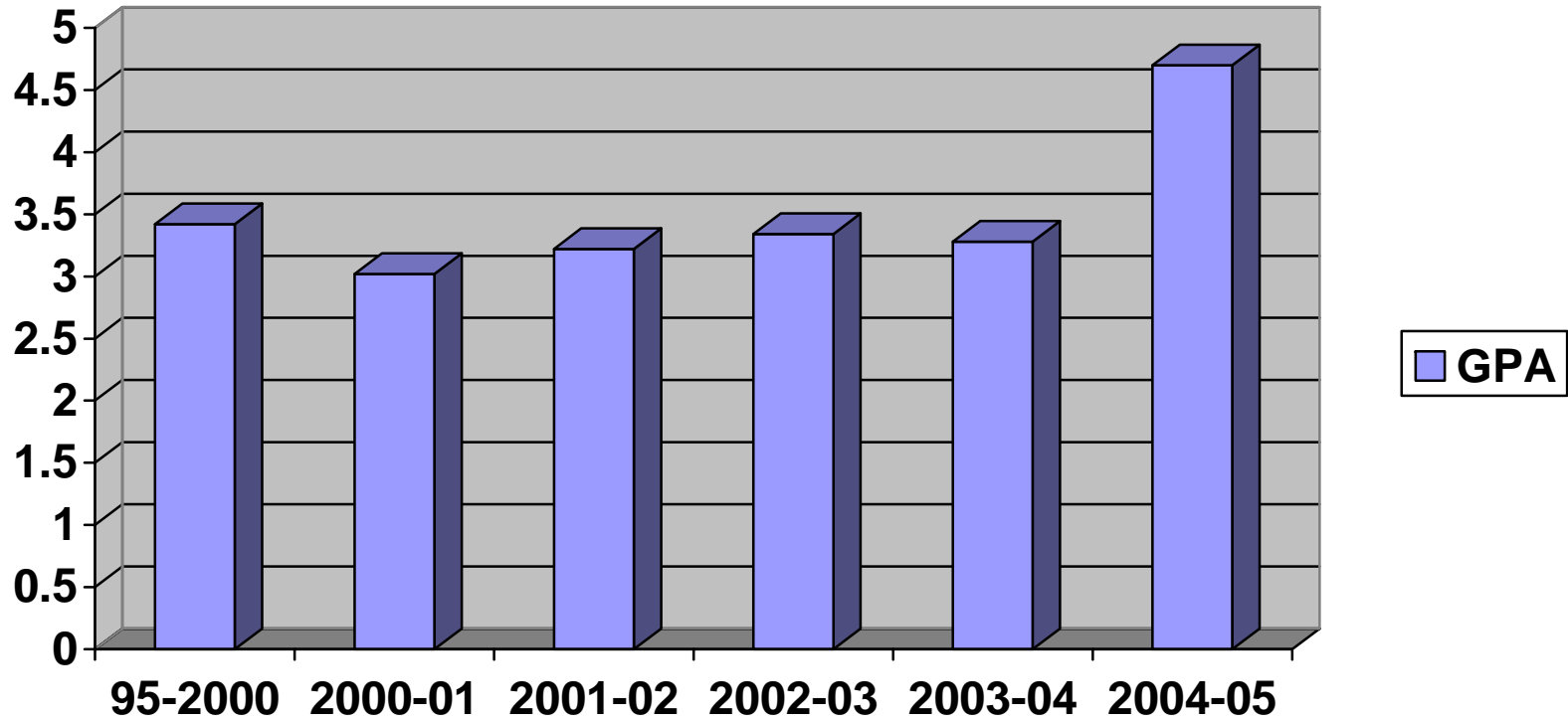
**TECHNOLOGY
GPA END OF FIRST SEMESTER**



Years	1995-2000 (all semesters)	2000-01	2001-02	2002-03	2003-04	2004-05
GPA	2.9	3.16	2.95	3.29	3.08	2.90

CHART 23

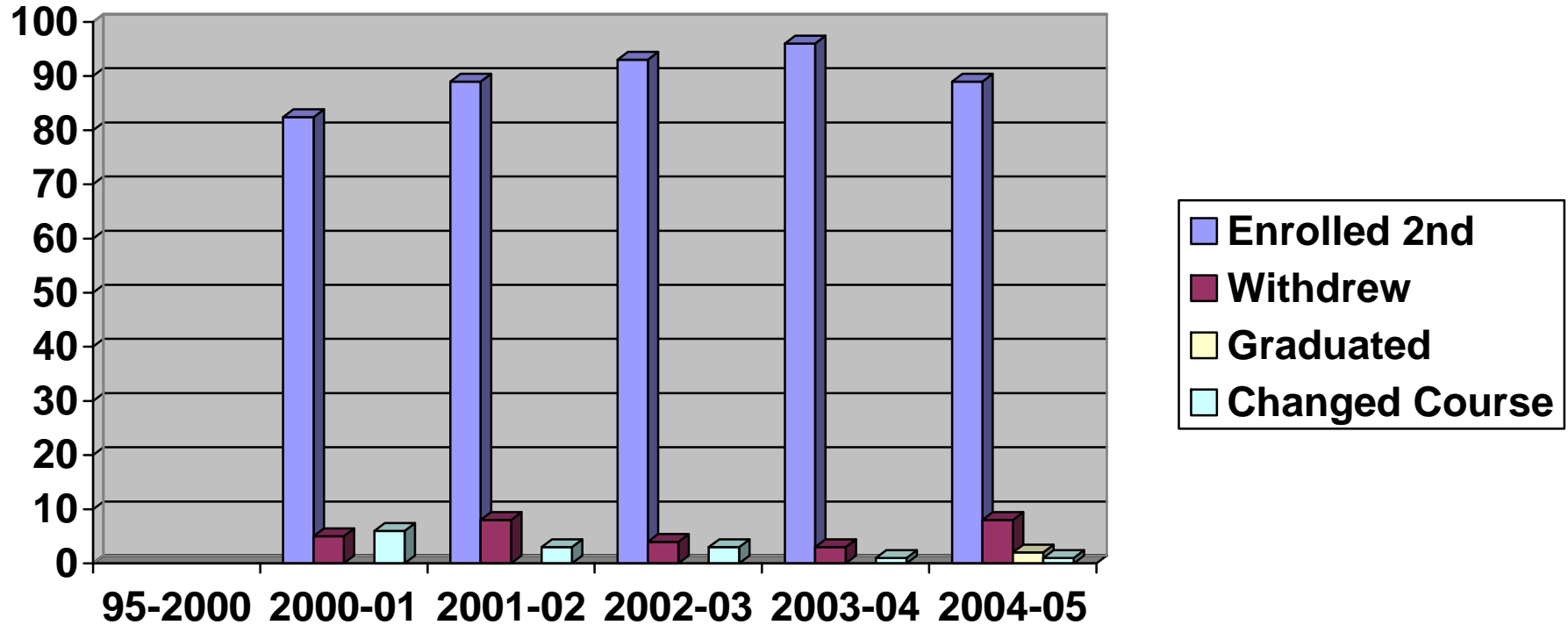
**TRADES & SKILLS
GPA END OF FIRST SEMESTER**



Years	1995-2000 (all semesters)	2000-01	2001-02	2002-03	2003-04	2004-05
GPA	3.42	3.02	3.22	3.34	3.28	4.70

CHART 24

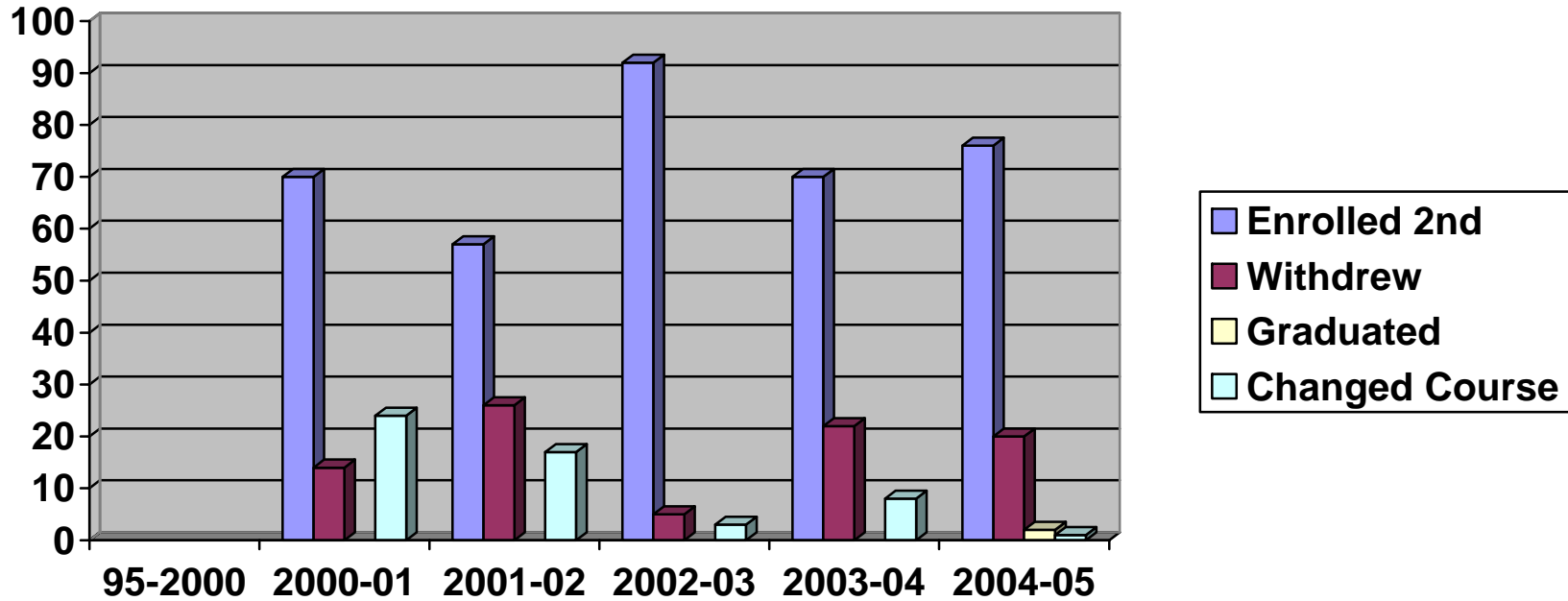
**BUSINESS
ENROLMENT STATUS AT END OF FIRST SEMESTER**



Years	1995-2000	2000-01	2001-02	2002-03	2003-04	2004-05
Enrolled 2 nd Semester	N/A	82.4 %	89 %	93 %	96%	89%
Withdrew	N/A	5 %	8 %	4 %	3%	8%
Graduated	N/A	N/A	N/A	N/A	N/A	2%
Changed Course	N/A	6 %	3 %	3 %	1%	1%

CHART 25

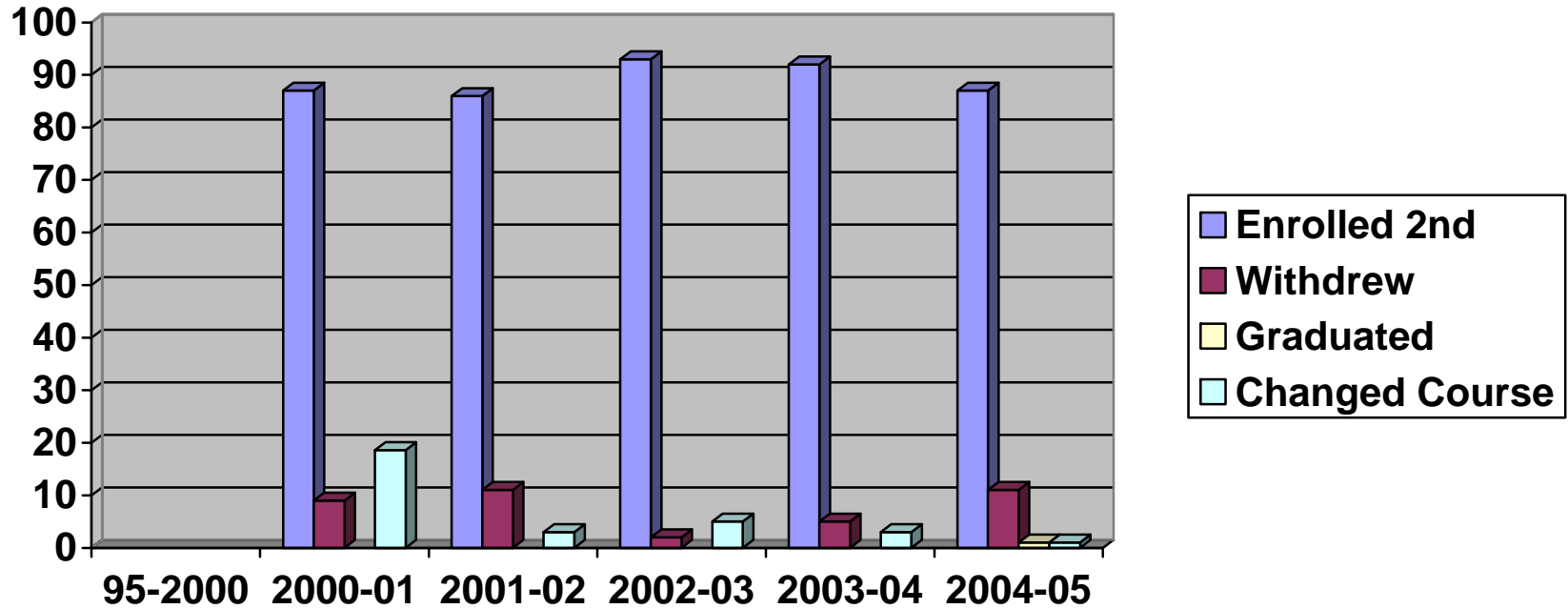
**GENERAL ARTS & SCIENCES
ENROLMENT STATUS AT END OF FIRST SEMESTER**



Years	1995-2000	2000-01	2001-02	2002-03	2003-04	2004-05
Enrolled 2 nd Semester	N/A	70 %	57 %	92 %	70%	76%
Withdrew	N/A	14 %	26 %	5 %	22%	20%
Graduated	N/A	N/A	N/A	N/A	N/A	2%
Changed Course	N/A	24 %	17 %	3 %	8%	1%

CHART 26

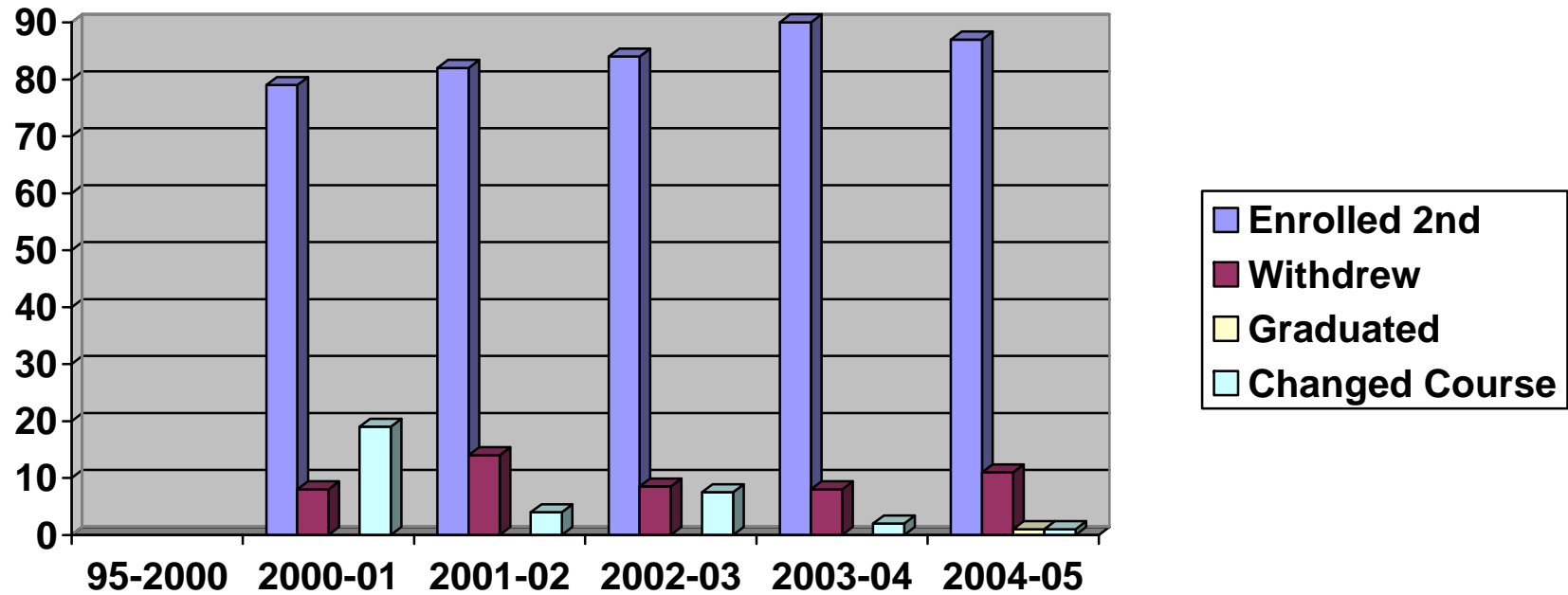
**HEALTH SCIENCES
ENROLMENT STATUS AT END OF FIRST SEMESTER**



Years	1995-2000	2000-01	2001-02	2002-03	2003-04	2004-05
Enrolled 2 nd Semester (includes graduates)	N/A	87 %	86 %	93 %	92%	87%
Withdrew	N/A	9 %	11 %	2 %	5%	11%
Graduated	N/A	N/A	N/A	N/A		1%
Changed Course	N/A	18.6 %	3 %	5 %	3%	1%

CHART 27

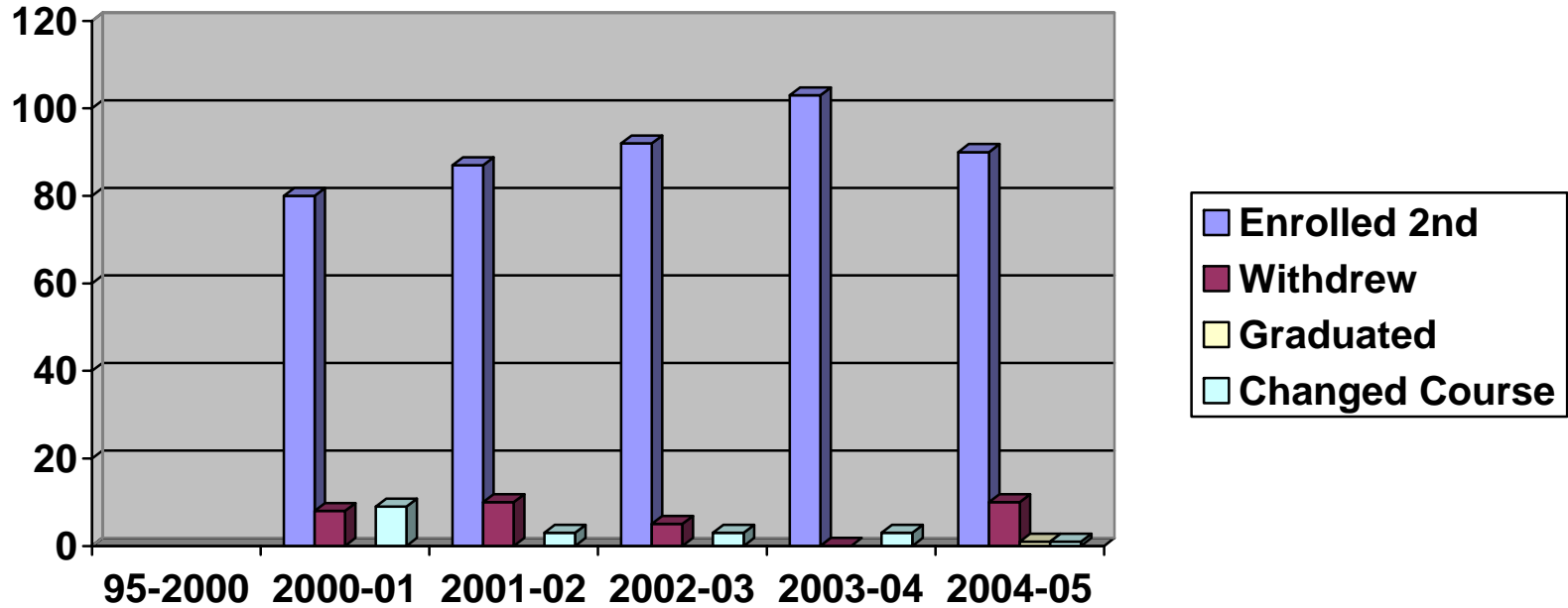
**OTHER
ENROLMENT STATUS AT END OF FIRST SEMESTER**



Years	1995-2000	2000-01	2001-02	2002-03	2003-04	2004-05
Enrolled 2 nd Semester (includes graduates)	N/A	79 %	82 %	84 %	90%	87%
Withdrew	N/A	8 %	14 %	8.5 %	8%	11%
Graduated	N/A	N/A	N/A	N/A	N./A	1%
Changed Course	N/A	19 %	4 %	7.5 %	2%	1%

CHART 28

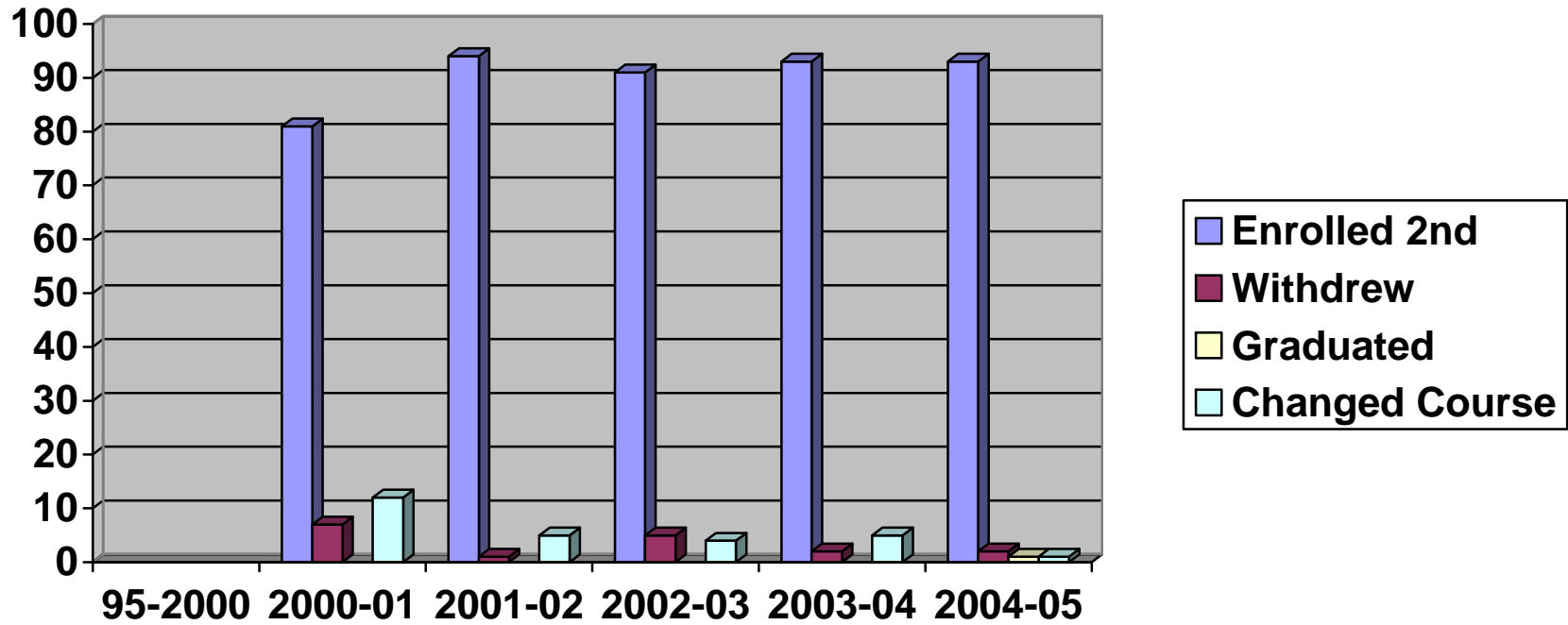
**SOCIAL SERVICES
ENROLMENT STATUS AT END OF FIRST SEMESTER**



Years	1995-2000	2000-01	2001-02	2002-03	2003-04	2004-05
Enrolled 2 nd Semester (includes graduates)	N/A	80 %	87 %	92 %	103%	90%
Withdrew	N/A	8 %	10 %	5 %	0%	10%
Graduated	N/A	N/A	N/A	N/A	N/A	1%
Changed Course	N/A	9 %	3 %	3 %	3%	1%

CHART 29

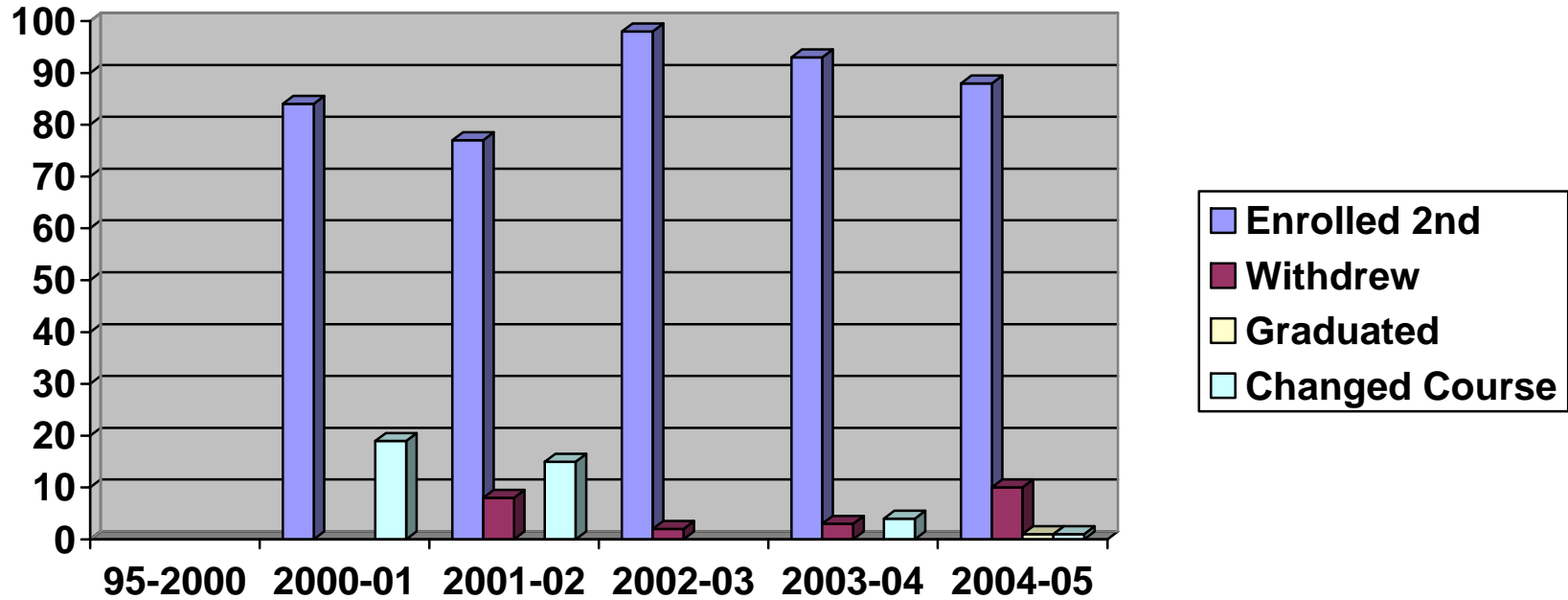
**TECHNOLOGY
ENROLMENT STATUS AT END OF FIRST SEMESTER**



Years	1995-2000	2000-01	2001-02	2002-03	2003-04	2004-05
Enrolled 2 nd Semester (includes graduates)	N/A	81 %	94 %	91 %	93%	93%
Withdrew	N/A	7 %	1 %	5 %	2%	2%
Graduated	N/A	N/A	N/A	N/A	N/A	1%
Changed Course	N/A	12 %	5 %	4 %	5%	1%

CHART 30

**TRADES & SKILLS
ENROLMENT STATUS AT END OF FIRST SEMESTER**



Years	1995-2000	2000-01	2001-02	2002-03	2003-04	2004-05
Enrolled 2 nd Semester (includes graduates)	N/A	84 %	77 %	98 %	93%	88%
Withdrew	N/A		8 %	2 %	3%	10%
Graduated	N/A	N/A	N/A	N/A	N/A	1%
Changed Course	N/A	19 %	15 %	0 %	4%	1%